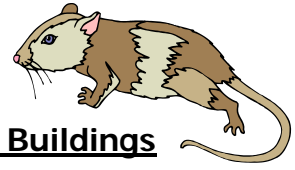




County of San Diego
Department of Environmental Health
(858) 505-6900 or (800) 253-9933
www.sdcounty.ca.gov/deh



Control of Vermin (cockroaches and mice) in Apartment Buildings

The elimination of vermin (cockroaches and or mice) from your apartment complex will take a team effort. The members of the team are; **Management, Tenants** and a **Pest Control Operator**. Each member of the team has specific responsibilities. If one member of the team doesn't do their part, the chances of successful vermin control are greatly reduced.

Because apartment units share common walls and ceilings with other units in the apartment building, it is essential that all units be treated (sprayed) within one or two days of each other. If one unit that has a cockroach infestation is not treated, it will only be a matter of time before the cockroach infestation spreads to other units. It is important that the management and tenants, prior to treatment of the units, follow all instructions given by the pest control operator.

Cockroaches and mice need four (4) conditions to exist in order to infest your apartment building.

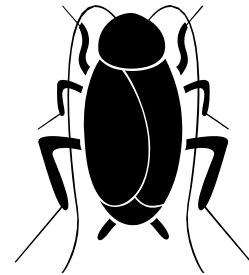
Food, water, access, harborage (place to hide).

What does the Management need to do to eliminate vermin?

1. Eliminate access and harborage by repairing all holes and cracks in the walls, ceilings and floors. Also, ensure that all exterior doors do not have gaps at the bottom greater than 1/8 of an inch.
2. Eliminate sources of water by repairing all plumbing leaks in both the bathroom and kitchen.

What does the Tenant need to do to eliminate vermin?

1. Report the first sign of cockroaches or mice to manager.
2. Eliminate sources of water by:
 - Not leaving dirty dishes in the sink overnight to soak.
 - Not leaving pet water dish out overnight.
 - Report all plumbing leaks to the manager.
3. Eliminate sources of food by:
 - Not leaving leftover food on the stove or counters.
 - Not leaving pet food dish with food out overnight.
 - Removing trash and or garbage from unit daily.
 - Clean all food debris from floors, tables and counter tops.
4. Follow all instructions from pest control operator prior to the unit being treated.



What does the Pest Control Operator need to do to eliminate vermin?

1. Properly treat all infested units.
2. Make recommendation to manager on proper exclusion of vermin from units.