



California Accelerated Cleanup Project  
For Releases From Leaking  
Underground Storage Tanks  
(LUST).

---

George McCandless  
San Diego County Department of  
Environmental Health  
Site Assessment & Mitigation Program (SAM)  
619.338.2259  
[george.mccandless@sdcounty.ca.gov](mailto:george.mccandless@sdcounty.ca.gov)

# Overview



---

- California Accelerated Cleanup Project
- Federal Perspective
- State Wide Efforts
- San Diego County's Efforts
- Industry Participation
- What it means for you
- Acknowledgments



# California Accelerated Cleanup Project

---

- US EPA, and the California State Water Resources Control Board (SWRCB) UST Cleanup Unit have been working cooperatively for a number of years to improve the efficiency of LUST cleanups.
- Efforts now include the Regional Boards and local regulatory agencies



# California Accelerated Cleanup Project - Process

---

- Study California's LUST closure process to identify any obstacles to site cleanups
- Identify existing activities that help speed site cleanups.
- Use results to improve efficiency and rate of cleanups by streamlining the regulatory process.
- Provide assistance to identify and appropriately close existing low-risk LUST cases.



## EPA and SWRCB tasks:

---

- Use Geotracker to identify trends and issues related to site closure.
- Meet with local agencies to review regulatory process.
- Solicit input regarding obstacles or impediments to site closure.
- Provide assistance to identify and close low-risk sites.
- Help to identify and implement pilot projects.
- Provide assistance for implementing improved regulatory process.



# Goals

---

- Increase the number of case cleanup and closure by 10-20% each year over the next two years
- (baseline of 1000 LUST closures per year)
- Short-term reductions in the number of open cases by closing low-risk sites
- Longer-term reductions through changes in regulatory procedures

# California Accelerated LUST Cleanup Program Closing Low Risk LUST Sites

U.S. EPA Underground Storage  
Tanks Program Office  
Matt Small and Greg Lovato





# Government Performance and Results Act (GPRA) Goals for LUST Program

---

## 1993 GPRA

- Requires EPA to set performance goals for all programs

## 2002 LUST Program

- Set goal of 21,000 cleanups per year nationwide

## 2005 GPRA Goal Change

- GPRA lowered
  - Tighter Resources
  - Tougher Sites Remain
  - MTBE

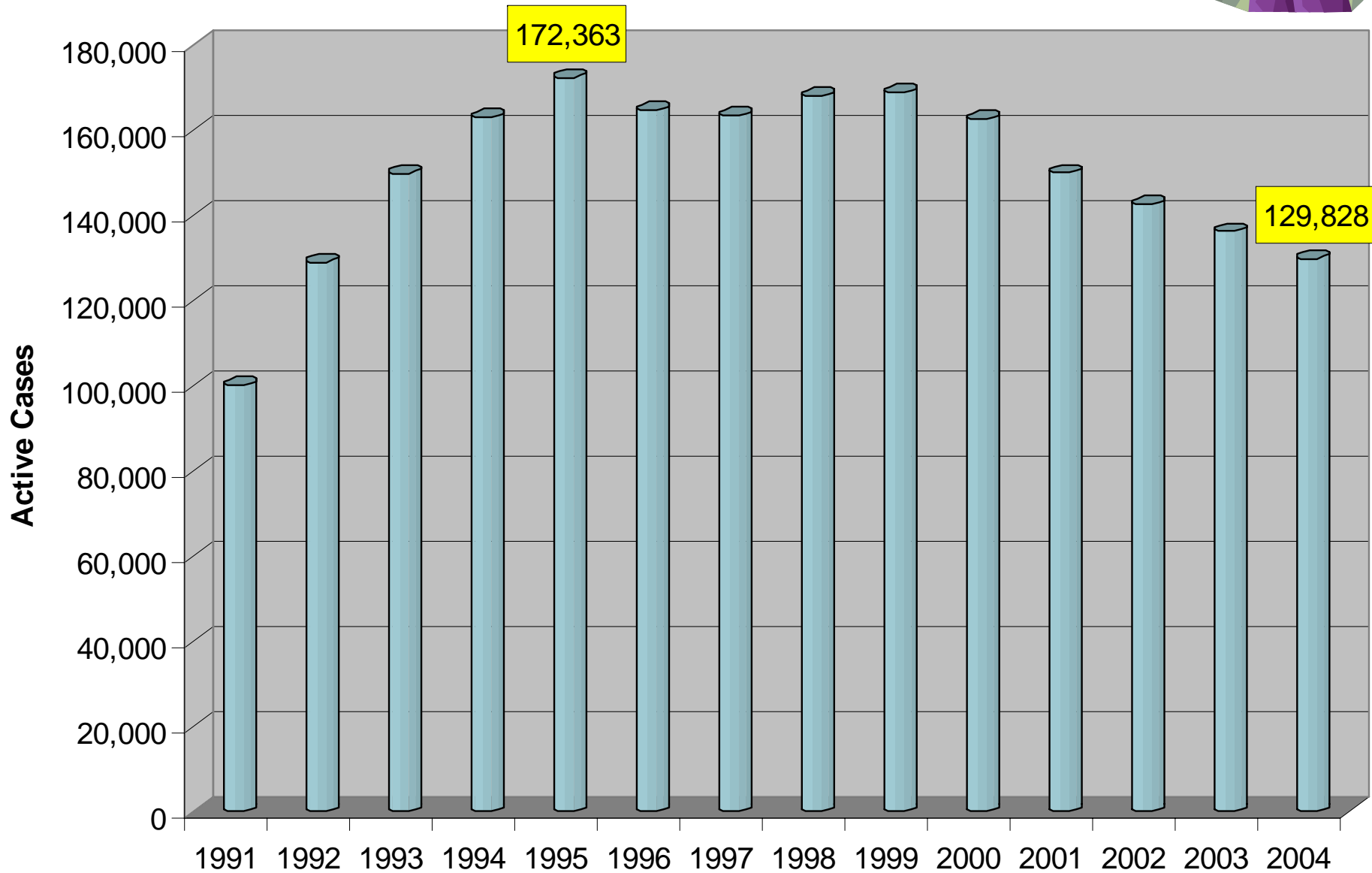


# Progress on Cleanups

---

- 447,000 releases reported nationwide since 1988
- 317,405 cleanups have been completed since 1988.
- Cleanups have been initiated at 92% of all confirmed releases in the U.S.
- Nearly 71% of all confirmed petroleum releases have been cleaned up.
- Cleanups reported for 2003 met the national goal at 18,518, but declined in 2004 to 14,285.

# National Trends – Active Caseload 1991 - 2004





# Much Work Still Remains

---

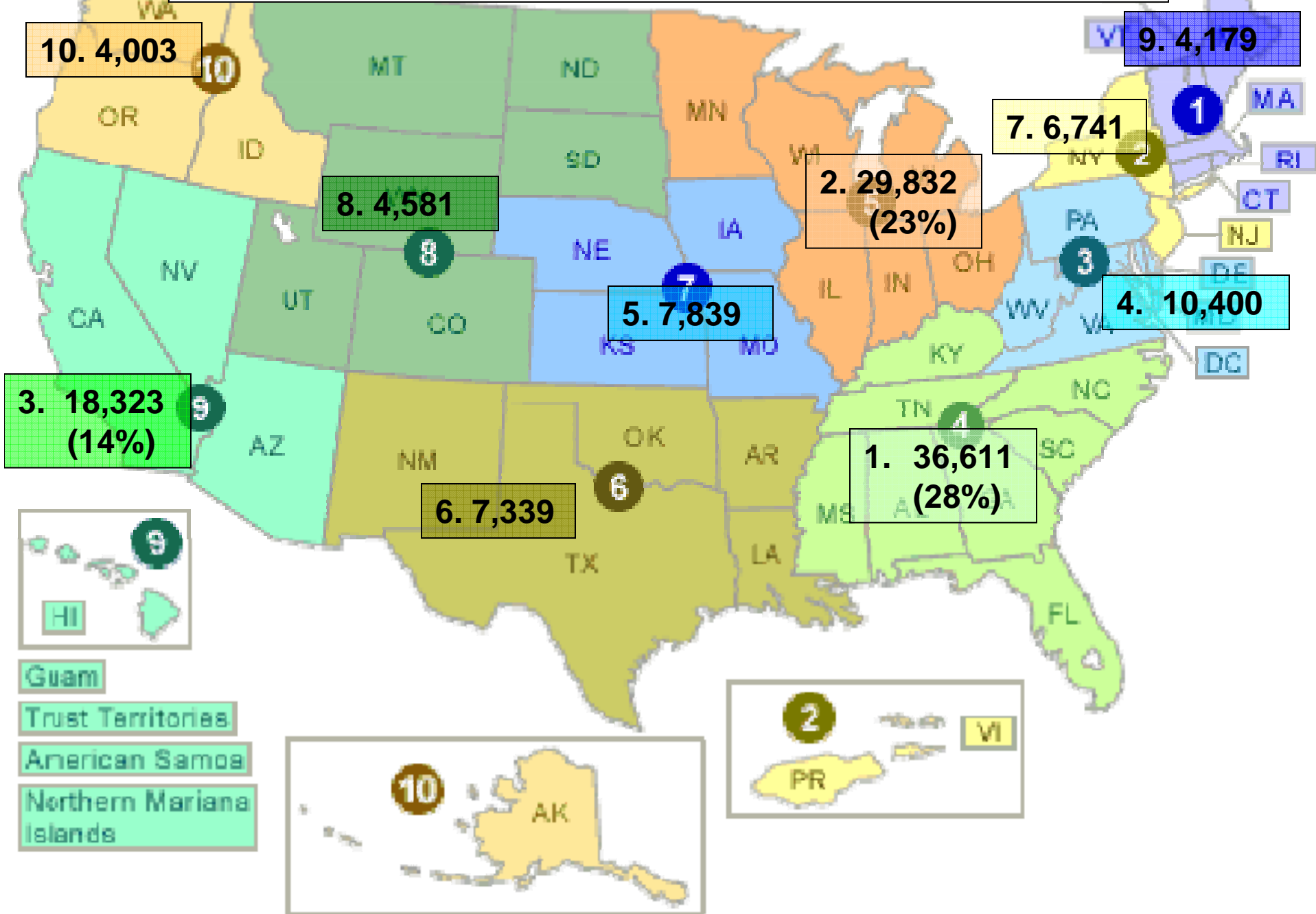
- Existing Caseload

- The national caseload is currently 129,000 LUST sites (declining trend).
- Over 50% of these cases involve groundwater contamination.

- Incoming Cases

- The 7,848 new releases reported in 2004 is about 61% of the historical average.
- This is under the national goal of no more than 10,000 new UST releases per year.

# Active LUST Cases by EPA Region (Sep 2004)



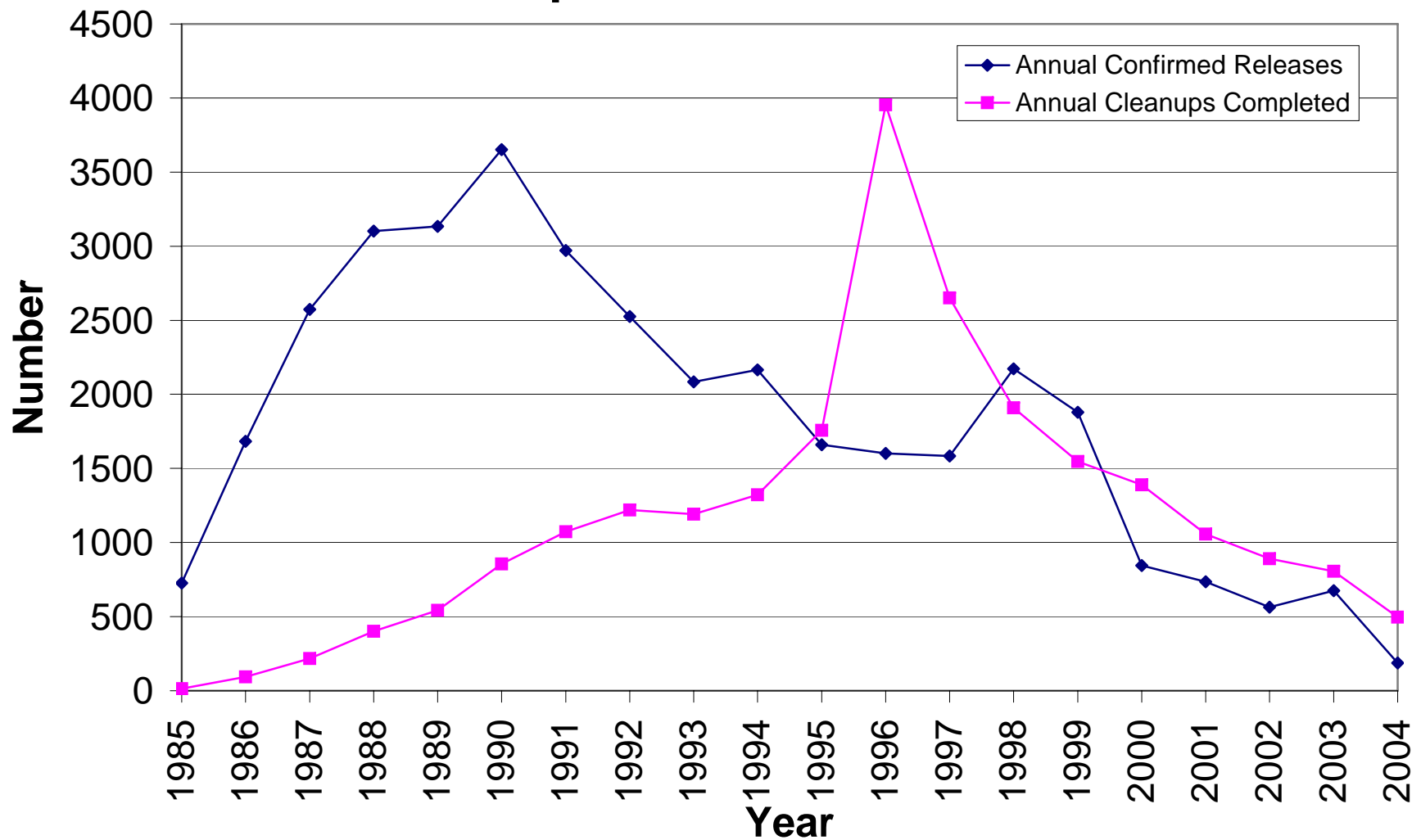


# How does CA fit into the picture? (Sep 2004)

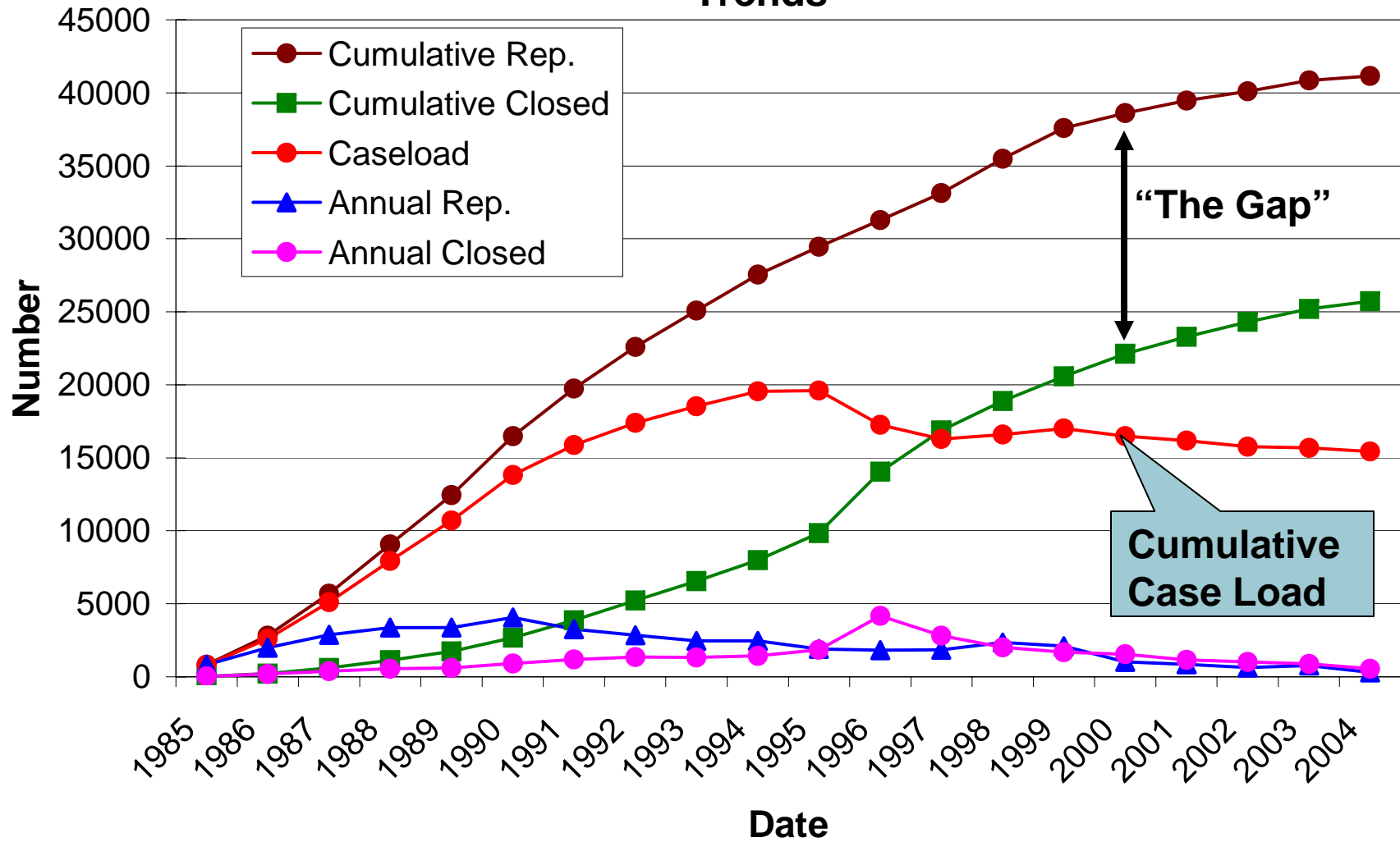
---

1. Florida (17,554)
2. California (15,049)
3. Michigan (9,039)
4. Illinois (8,591)
5. North Carolina (6,927)
6. Texas (4,577)
7. Pennsylvania (4,456)
8. New Jersey (3,825)
9. Wisconsin (3,641)
10. South Carolina (3,515)

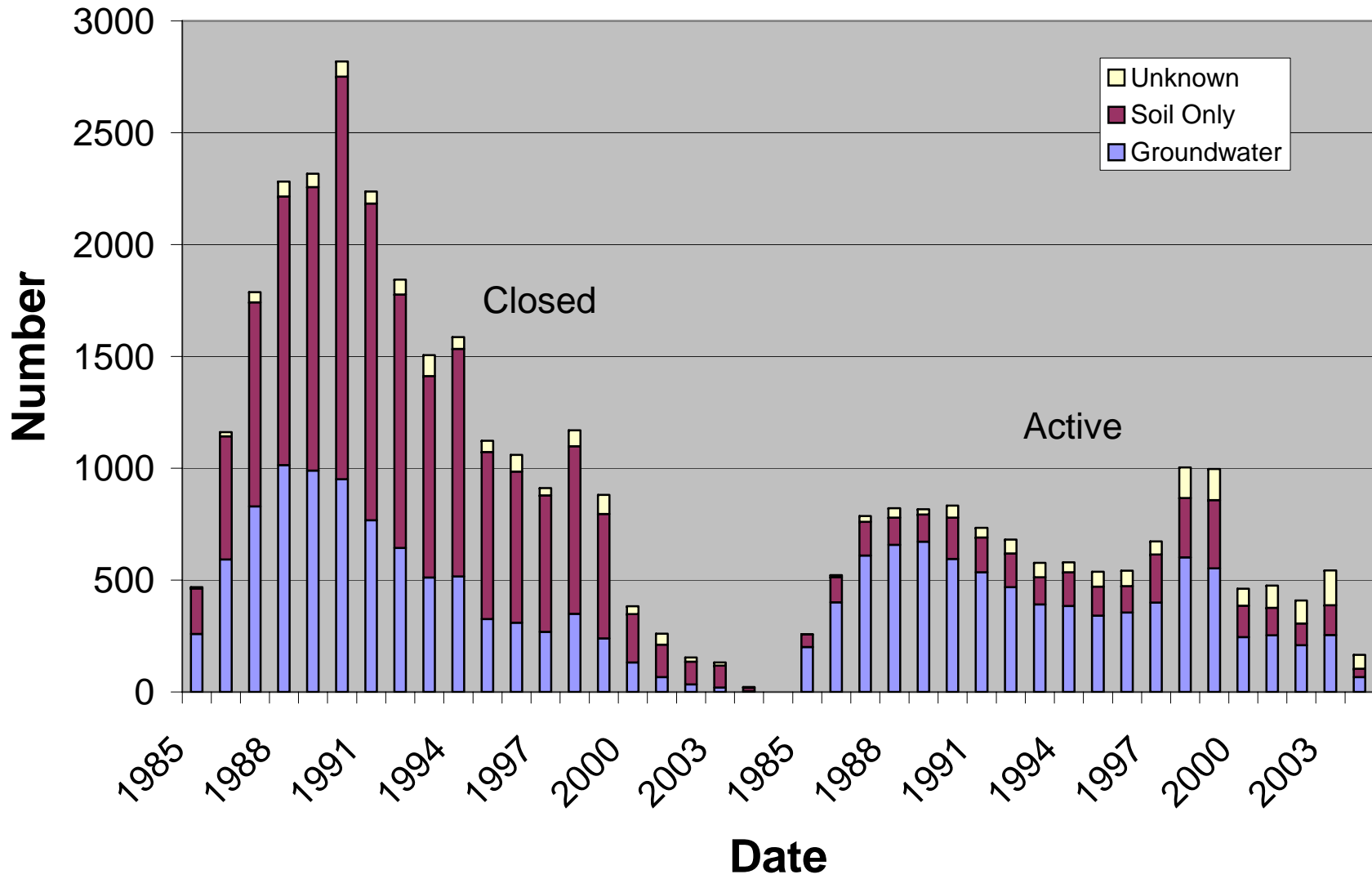
# Annual Confirmed Releases And Cleanups Completed in California



## California Confirmed Releases and Cleanups Completed Trends



# Breakdown of Sites by Case Type California





## Top 10 Pieces of Data/Information Typically Missing from Case Files that Impede Closure Evaluation:

---

- Land Owner Notification (AB681) is missing.
- Responsible Party (RP) is not in compliance with Electronic Deliverable Format (EDF) data submittals to Geotracker.
- Confirmation sampling not conducted.
- No down gradient groundwater monitoring well.
- Soil sampling/delineation inadequate.



## Top 10 Pieces of Data/Information Continued

---

- No soil samples in source area following initial sampling.
- Inadequate data for ensuring successful remediation.
- Inadequate groundwater sampling.
- Improper well construction.
- Site data not provided over time.

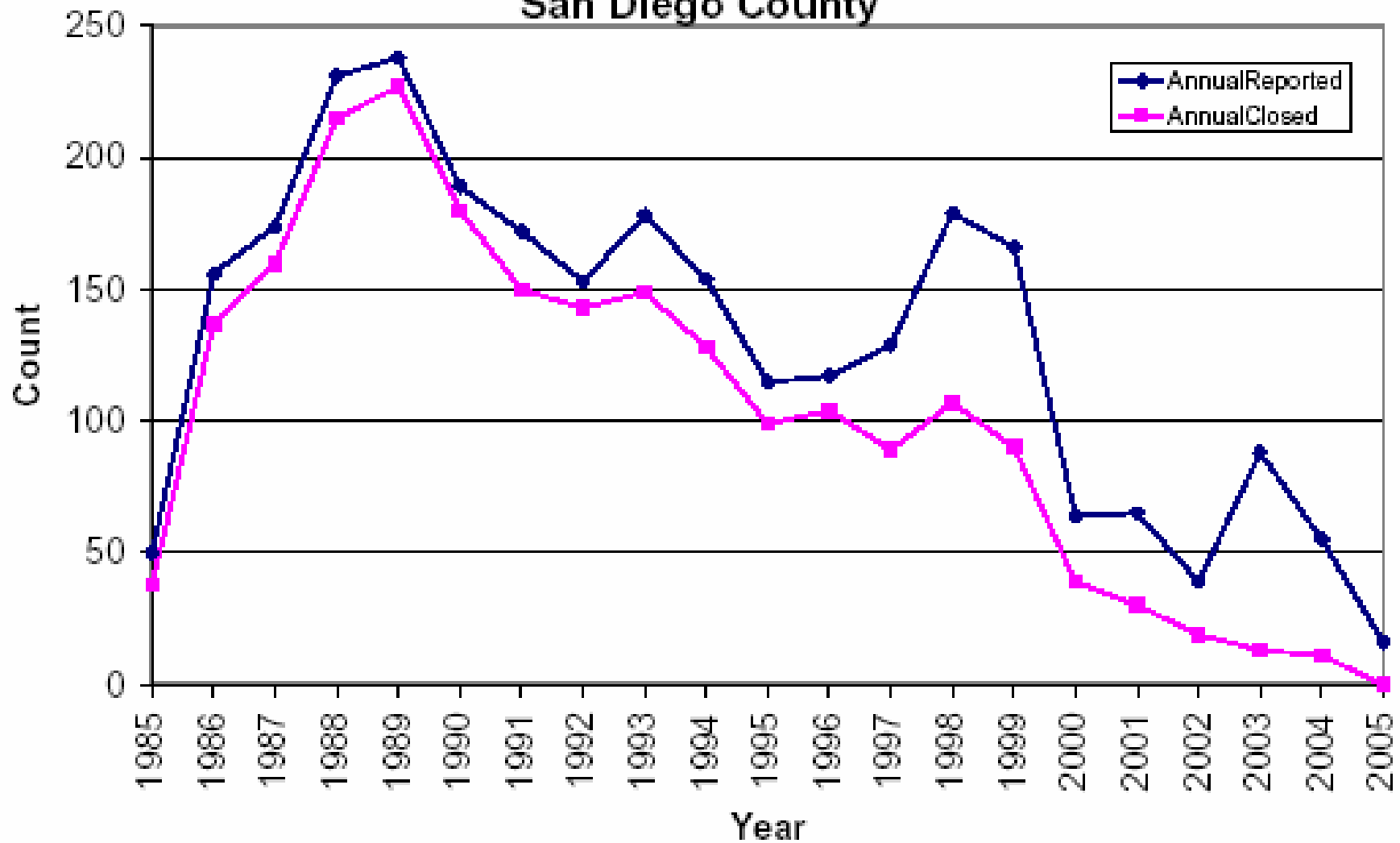


# San Diego County's Data - SAM

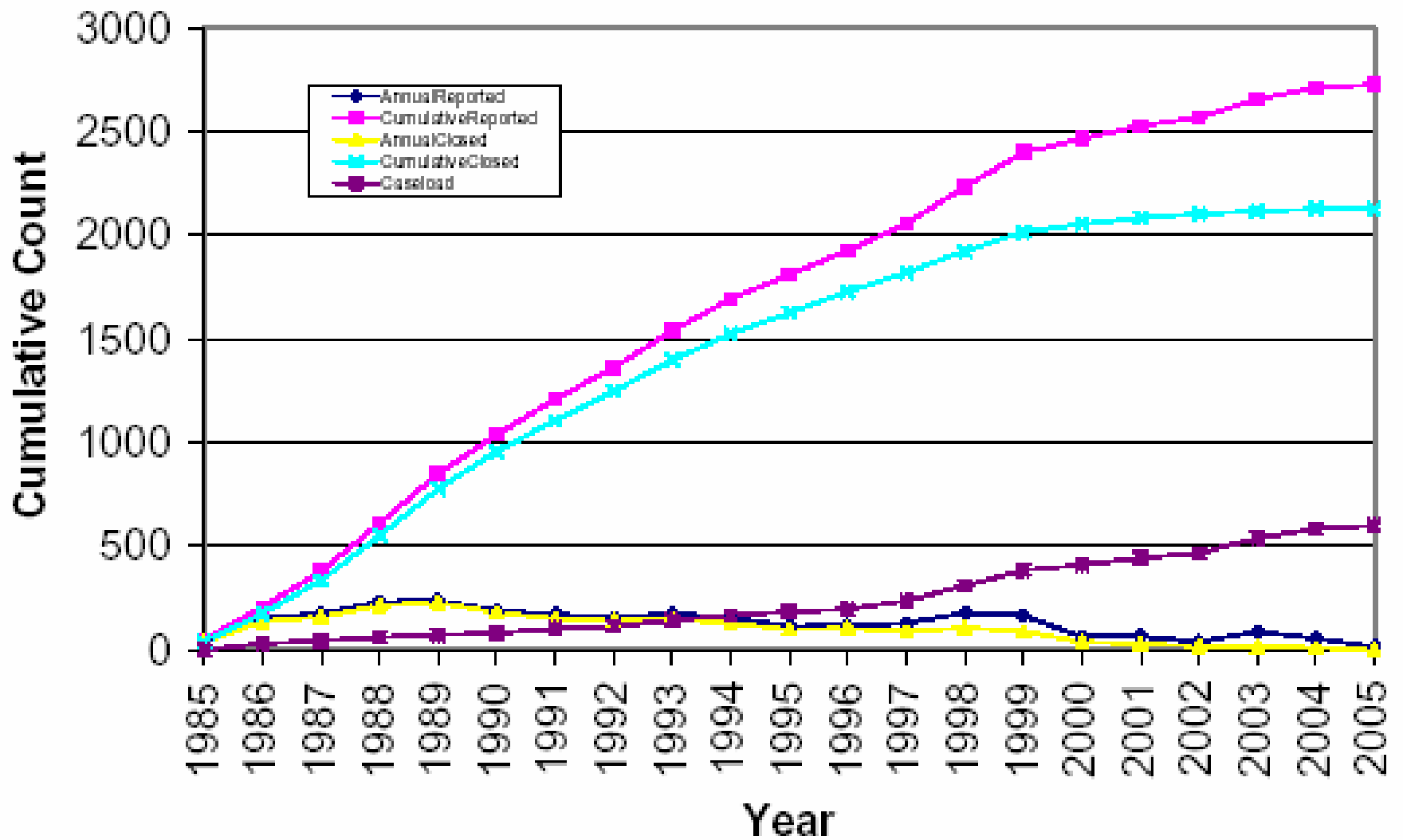
---

- Number of Opened Cases
- Number of Closed Cases
- By Case Type Groundwater / Soil Only
- Cases Older than 15 Years
- Cased Where the Reports or Work Plans Haven Been Submitted

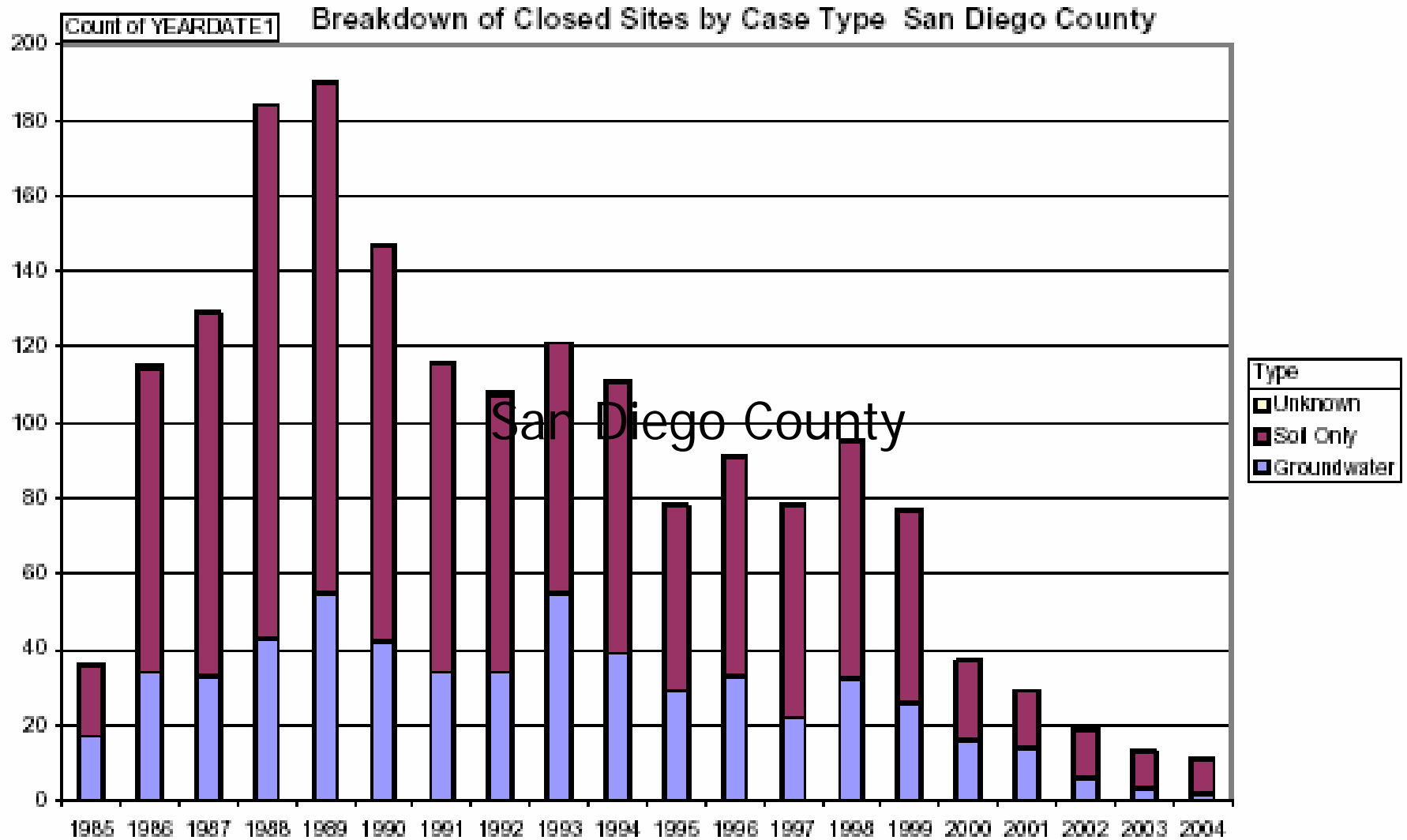
## Annual Confirmed Releases and Cleanups Completed San Diego County



## Cleanup Trends (all) San Diego County



ActiveFlag Closed PROGRAM LUST LEADAGENCY L LOCLAGENCY 37000L



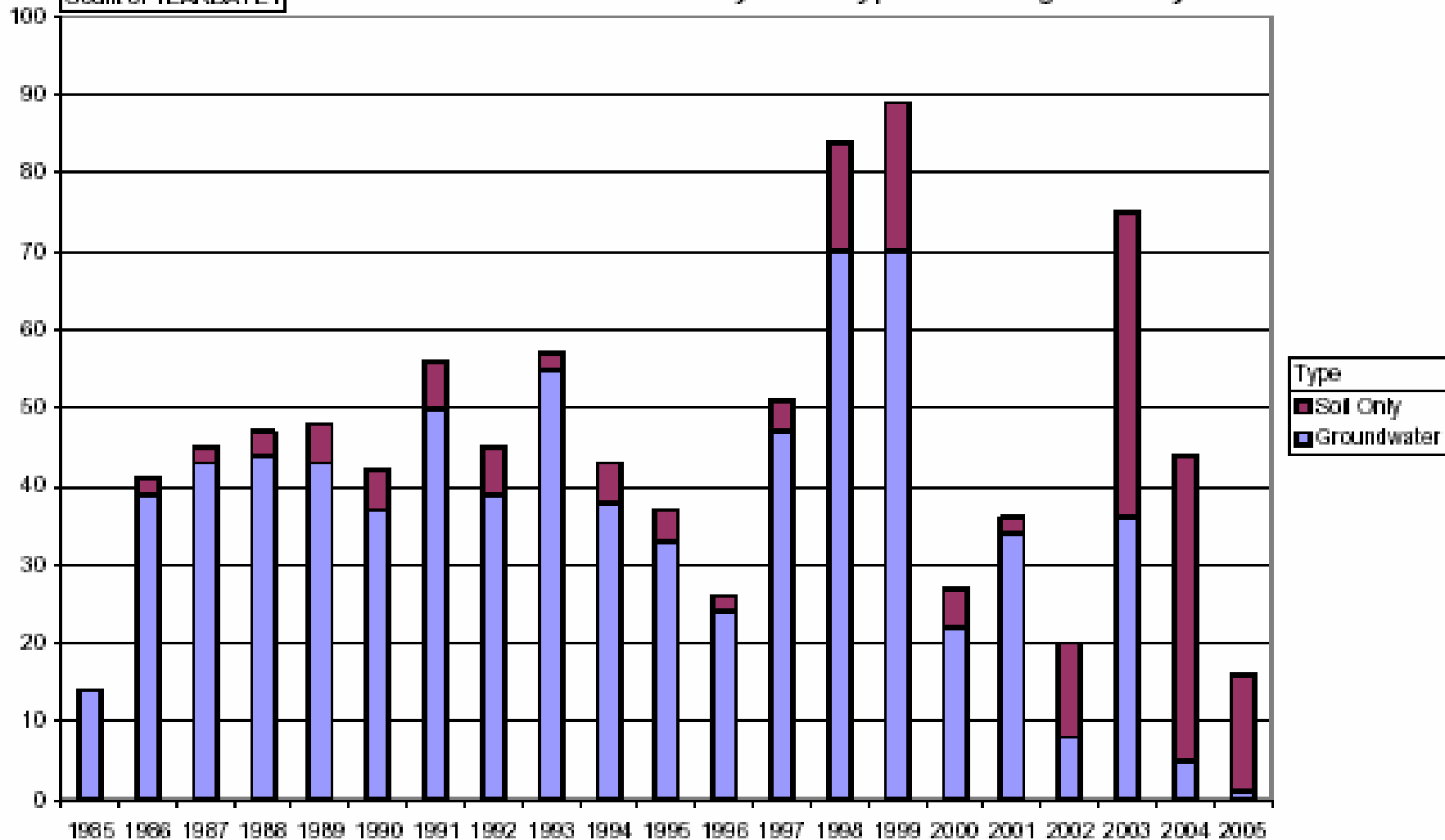
Total of 1785 records with valid confirmed release date.

Data as of 7/15/2005.

YEARDATE1

ActiveFlag Active PROGRAM LUST LEAD AGENCY LOCL AGENCY 37000

Count of YEARDATE1 Breakdown of Active Sites by Case Type San Diego County

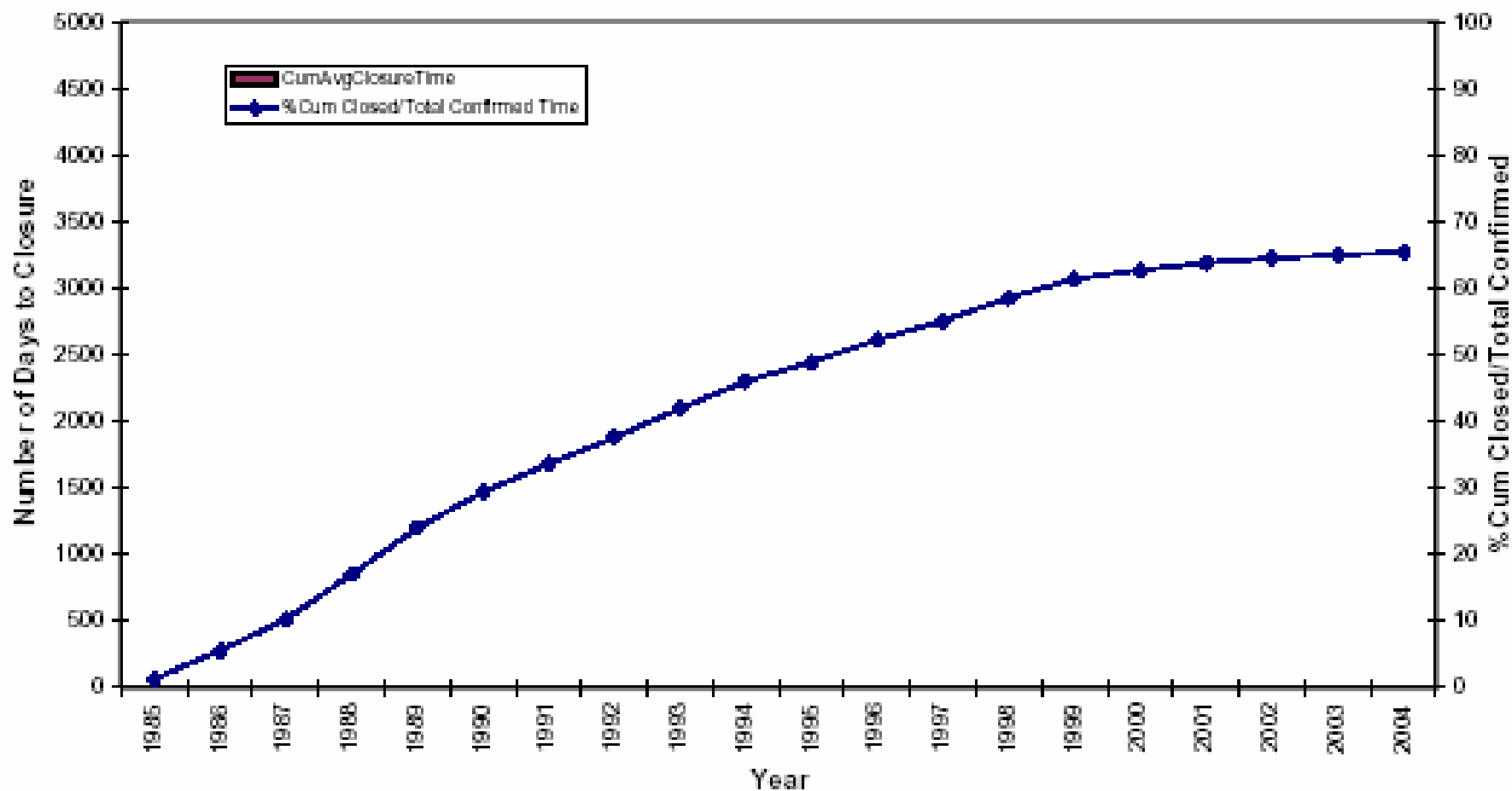


Total of 943 records with valid confirmed release date.

Data as of 7/15/2005.

YEARDATE1

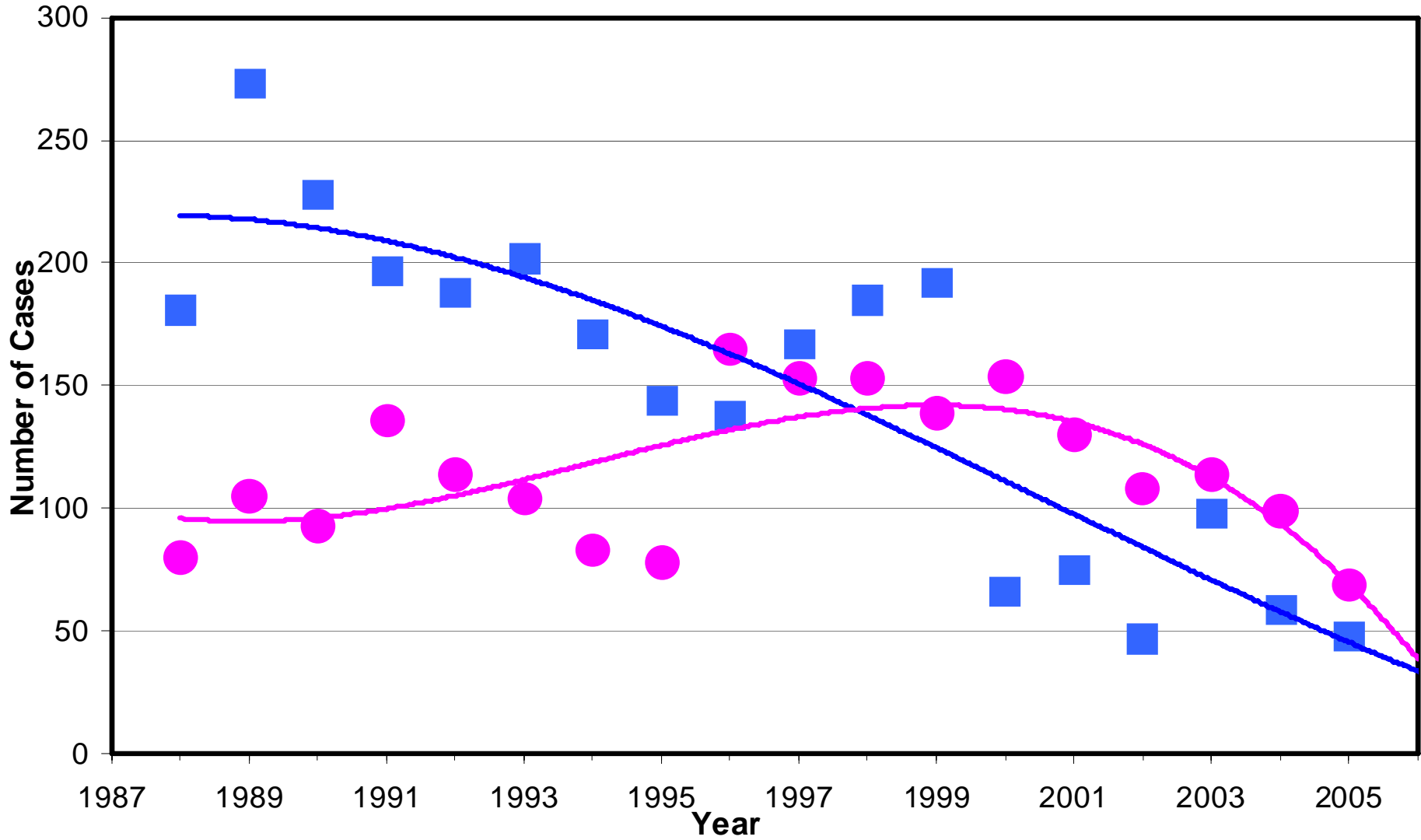
### Cumulative Average Time to Closure and Cumulative Percent of Confirmed Release Sites that have Closed- San Diego County



Total of 2728 records showing valid confirmed date and 2128 records showing valid closed date. Data as of 7/15/2005.

# SAN DIEGO COUNTY LOP CASES OPENED/CLOSED IN CALENDAR YEAR

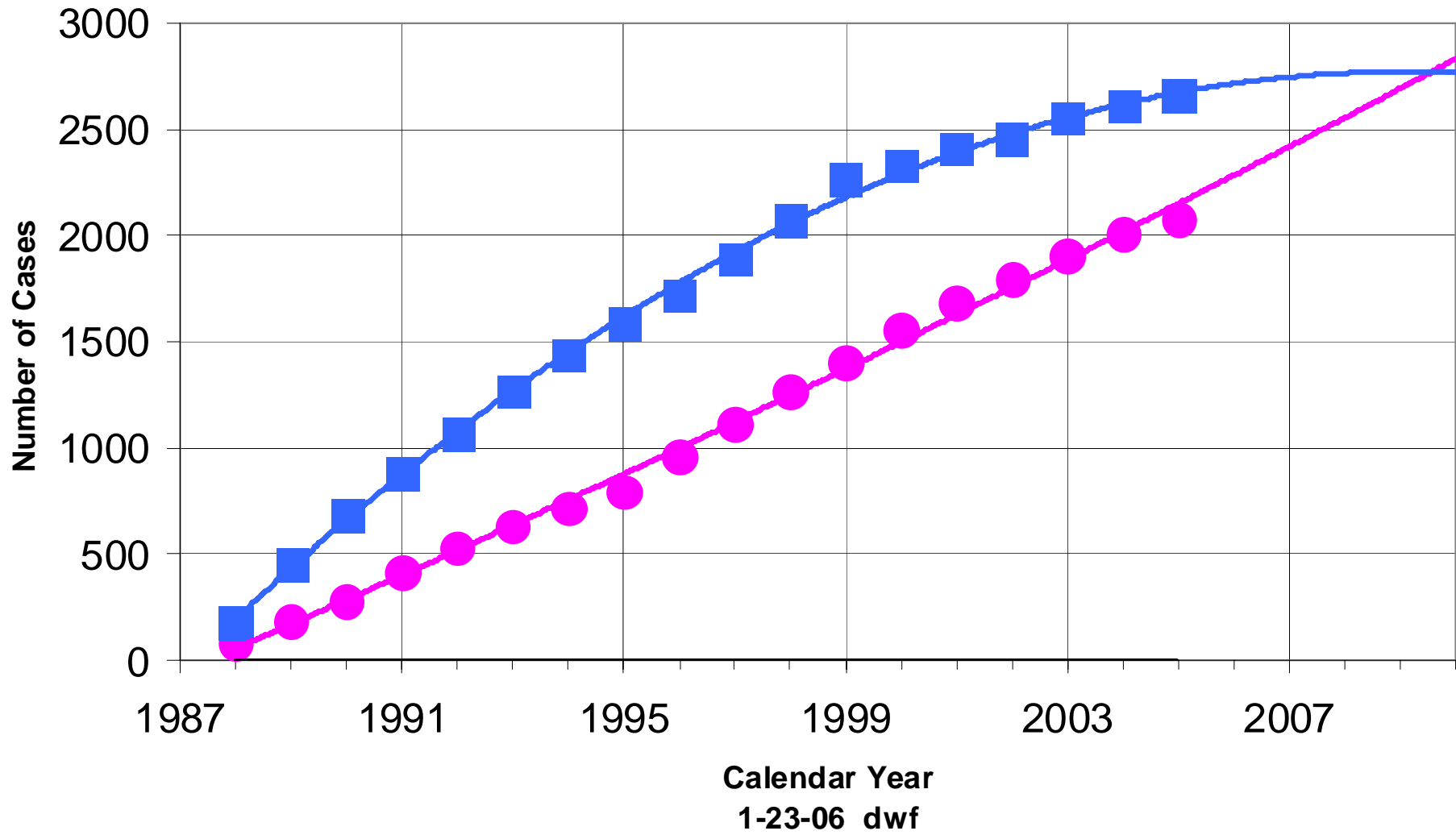
DWF 1-23-06



● No. cases closed      ■ No. cases opened

# SAN DIEGO COUNTY LOP CASES - CUMULATIVE OPENED/CLOSED IN CALENDAR YEAR

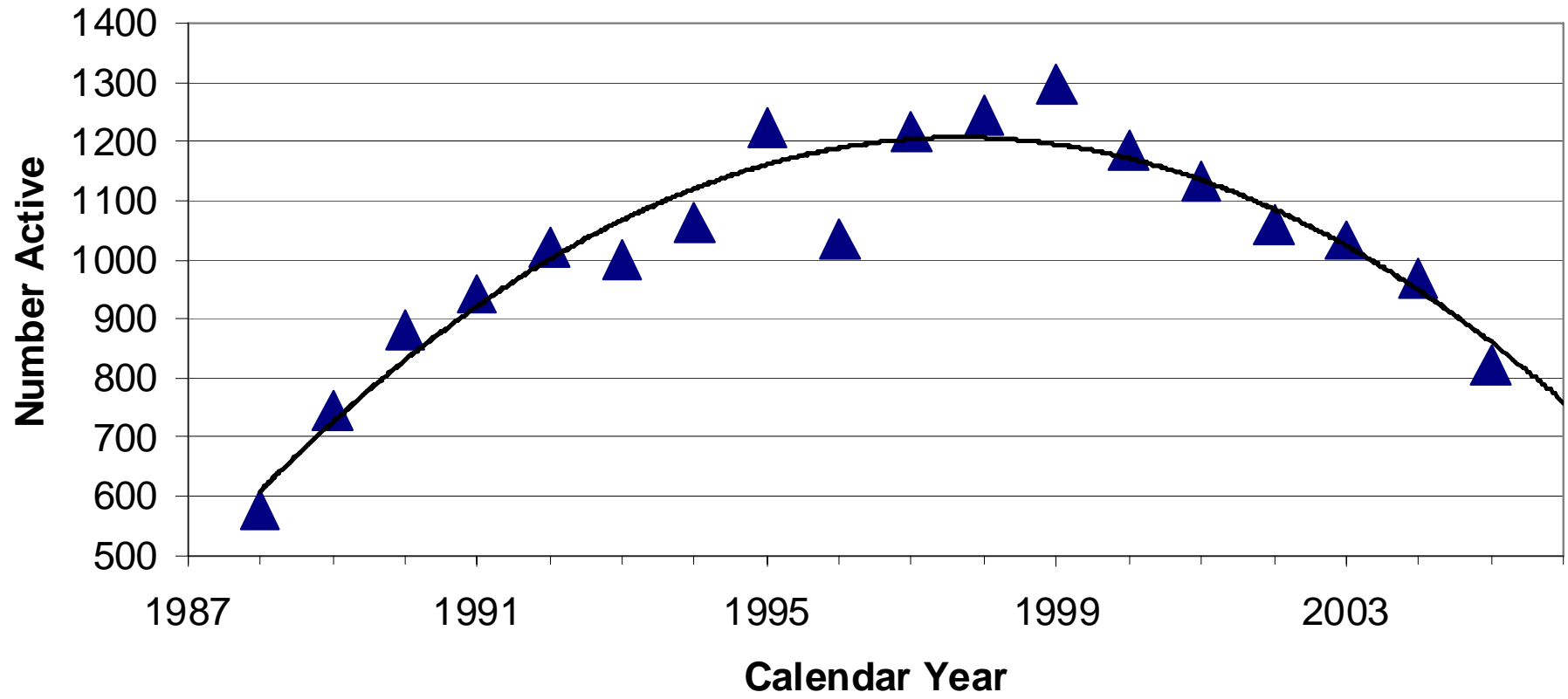
\*500 CASES EXISTED WHEN LOP STARTED IN 1988



● Cum. Total Closed During LOP ■ Cum. Total Opened\*

# SAN DIEGO COUNTY LOP CASES ACTIVE AT END OF CALENDAR YEAR

As of 2005, X and XS funded cases are no longer considered "active"



January 23 2006

dwf



# San Diego County's Efforts

---

- Reviewing backlog of LOP cases.
- Each case's investigation and cleanup activities.
- We will be sending out letters to selected RPs related to our work on the CACP.
- Calls to RP Regarding Geotracker, Landowner Notification & Past Dues
- Follow up with Guidance and/or Enforcement



# Three New Letters

---

- 1st letter to RPs of Low Priority/Inactive cases inviting them to enter the Private Oversight Program prior to the transfer to the RWQCB.
- 2<sup>nd</sup> letter to RPs giving them notice and guidance about Sunsetting of the Cleanup Fund.
- 3<sup>rd</sup> letter to the RPs of cases which have been inactive for the past two years.
- Directing the RP to provide a plan to complete of investigation and/or cleanup within two years.



# Industry Participation

---

- LA RWQCB Working with Major Oils
- Expedited Agency Oversight Program
- RP's Self Directed Work
- Low Human Health Risk Cases
- Submittal of Work Plans and H & S Plans
- Work starts after 60 days & RP's Notice of Intent
- Dr. Yue Rong, LA RWQCB
- AHES



# What it means for you?

---

- For the Consulting Community
  - Increased work as inactive cases become active.
  - Increased work due to the requirement to upload EDF data to Geotracker.
  - Increased work as RP takes advantage of the Fund
  - Need to address the missing item that Impede Cases Closure.
- For the RP
  - Need for cases to become active or keep active
  - Need to take advantage of the UST Cleanup Fund, before is Sunsets

# Acknowledgments



---

- Matt Small and Greg Lovato, US EPA UST Program
- Kevin Graves, SWRCB, UST Cleanup Unit
- John Odermatt and Jody Ebsen , SD RWQCB, Tank Site Mitigation and Cleanup Unit
- Ronald Duff and Bob Trommer, SWRCB, UST Cleanup Fund
- Tony Sawyer and Kevin Heaton, SAM



# Web Pages

---

- US EPA California Accelerated Cleanup Project -  
<http://www.epa.gov/region09/waste/ust/calaccelcleanup.html#outline>
- US EPA Underground Storage Tanks  
<http://www.epa.gov/region09/waste/ust/index.html>
- San Diego County Site Assessment & Mitigation (SAM)  
<http://www.sdcounty.ca.gov/deh/lwq/sam/index.html>
- San Diego RWQCB  
[www.waterboards.ca.gov/sandiego/](http://www.waterboards.ca.gov/sandiego/)
- SWRCB - Underground Storage Tank Program  
<http://www.waterboards.ca.gov/ust/>
- Geotracker  
[http://www.waterboards.ca.gov/ust/cleanup/electronic\\_reporting/index.html](http://www.waterboards.ca.gov/ust/cleanup/electronic_reporting/index.html)