



**McClellan-Palomar**

**Fly Friendly**

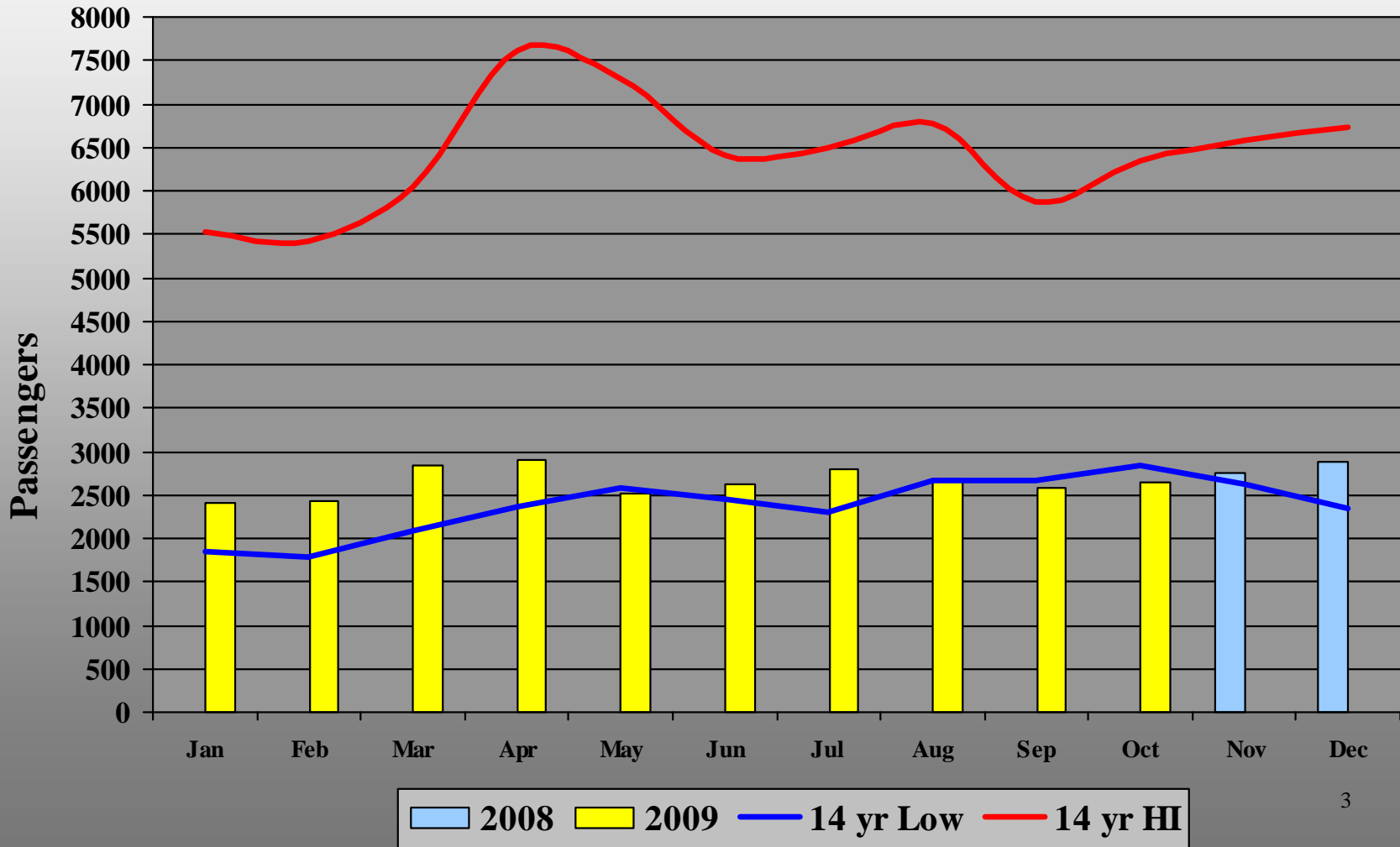
A photograph of a white private jet, likely a Gulfstream G650, parked on an asphalt tarmac. The aircraft is viewed from a low angle, showing its wings, engines, and tail. The background features a sunset sky with orange and pink clouds, and airport buildings and lights are visible in the distance. The overall scene is dimly lit, suggesting dusk or dawn.

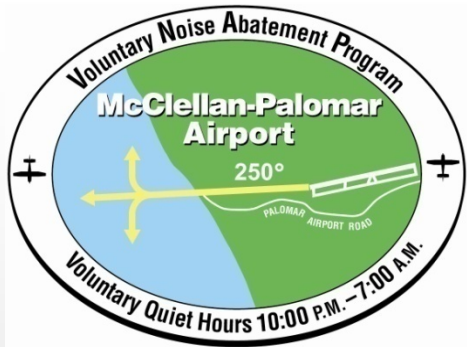
*McClellan-Palomar Airport  
Monthly Airport Performance Report*

*October  
2009*

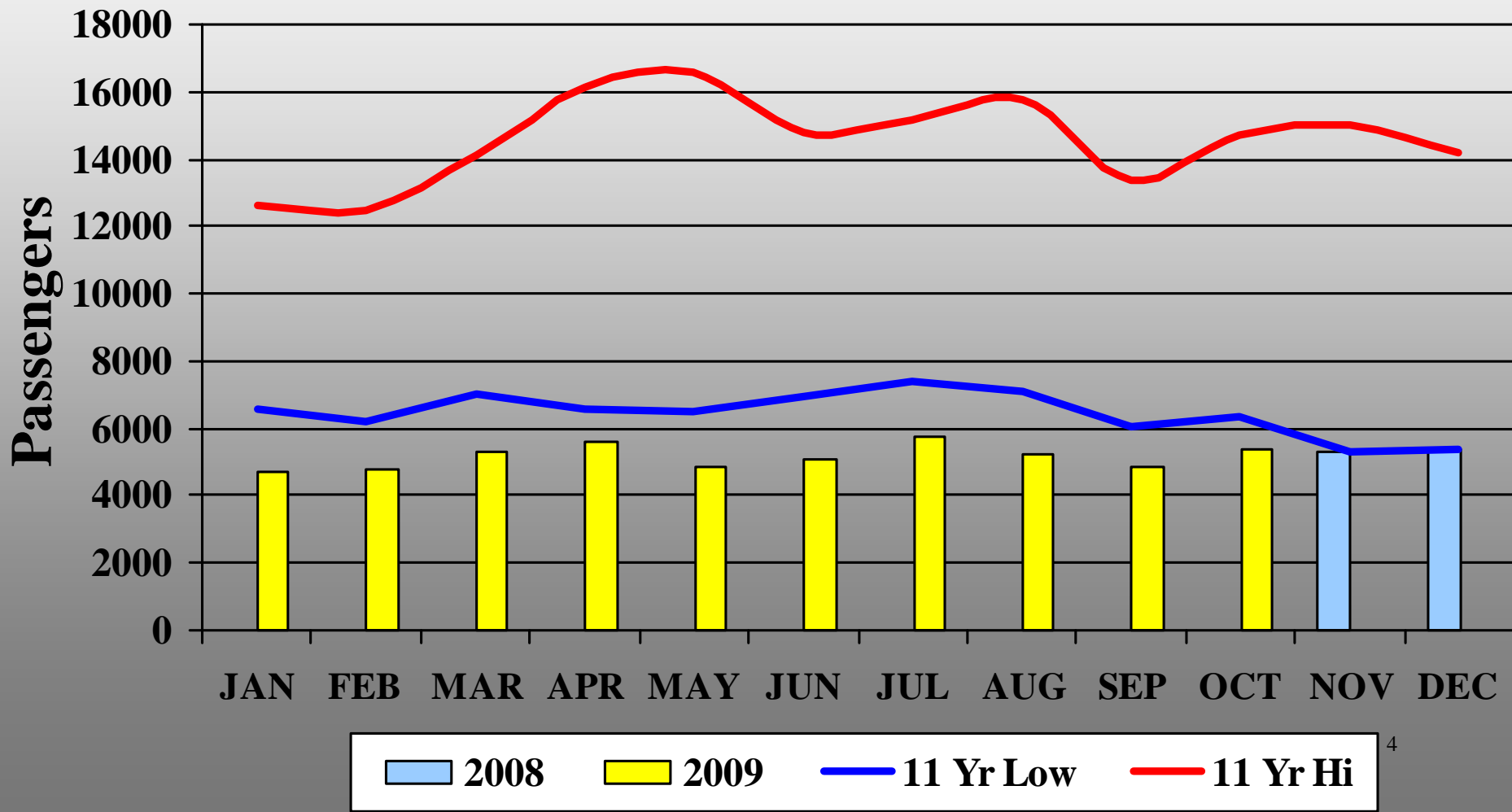


# Monthly Air Carrier Enplanements





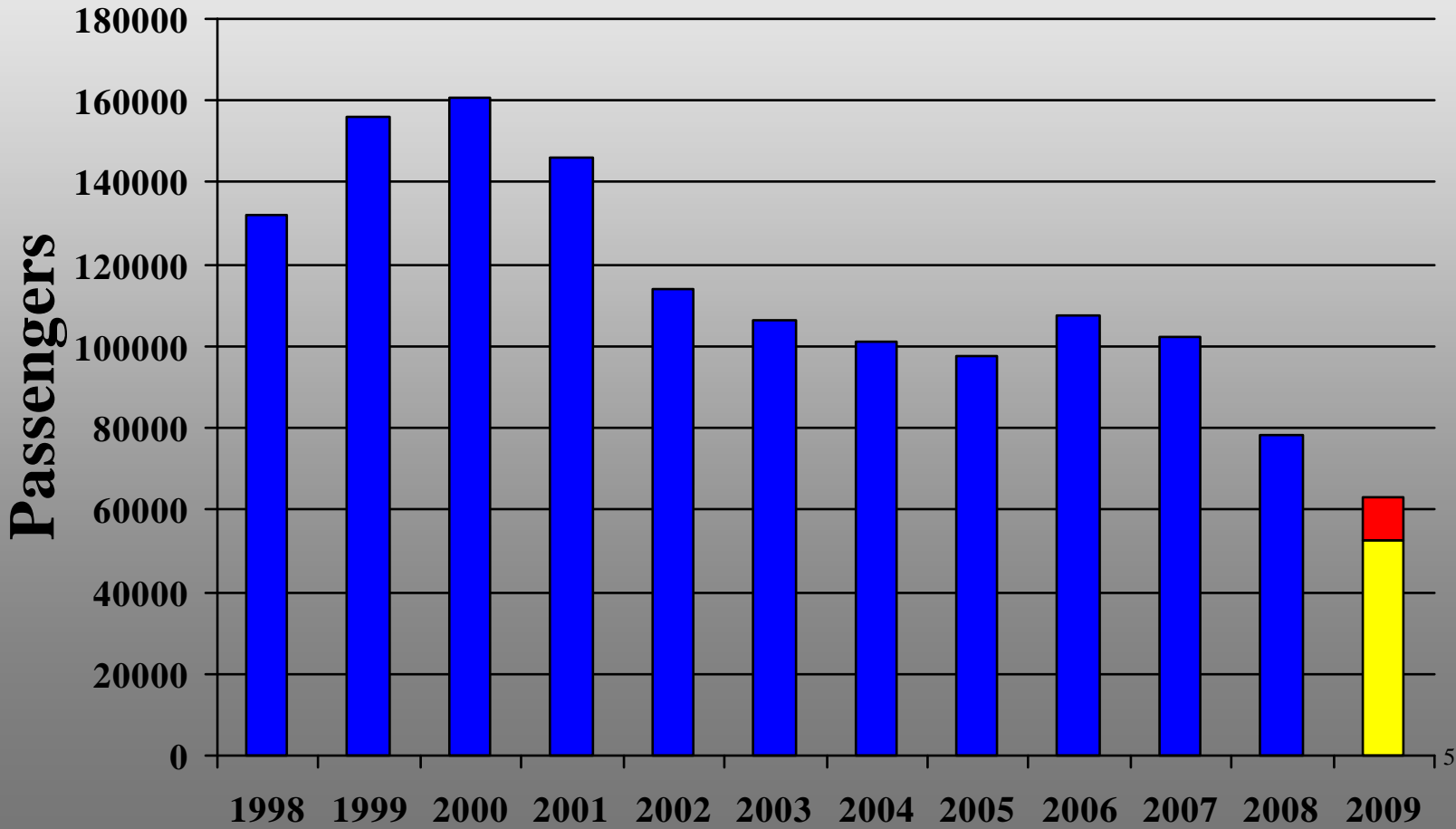
# Air Carrier Total Monthly Passengers





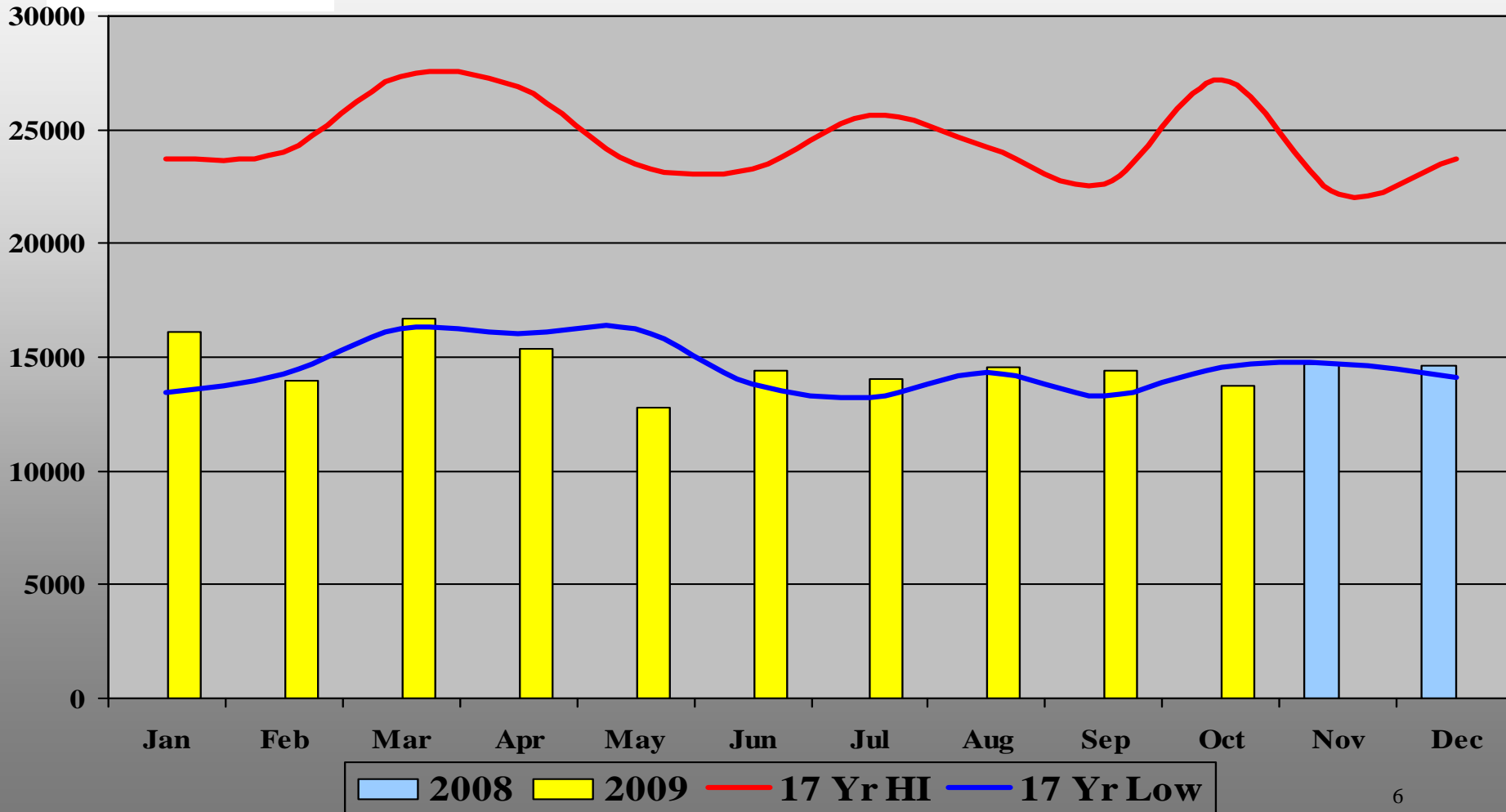
# Annual Air Carrier Passenger Terminal Throughput

■ Passenger
 ■ Actual
 ■ Projected



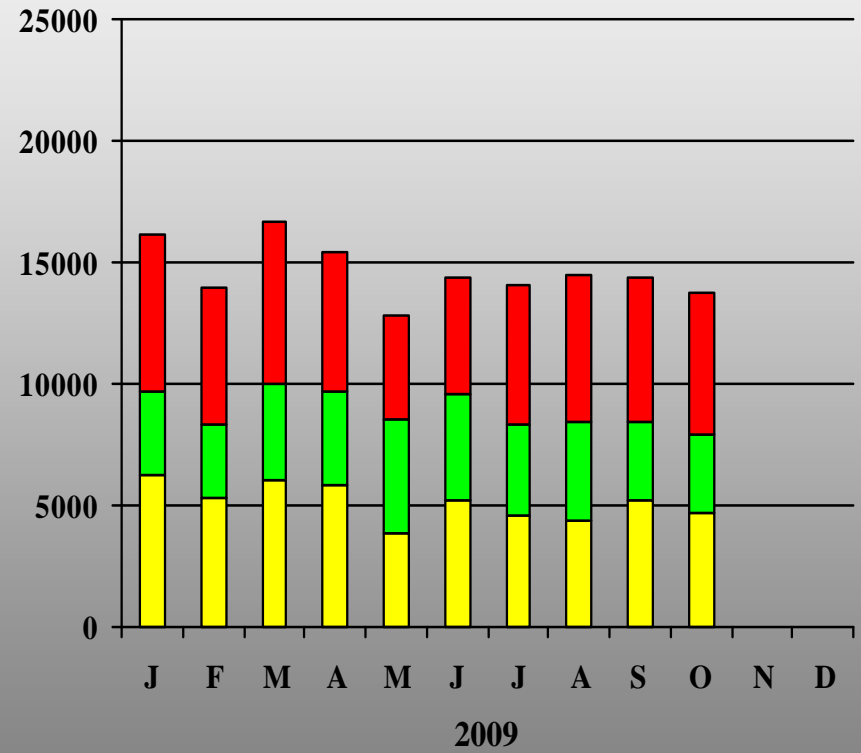
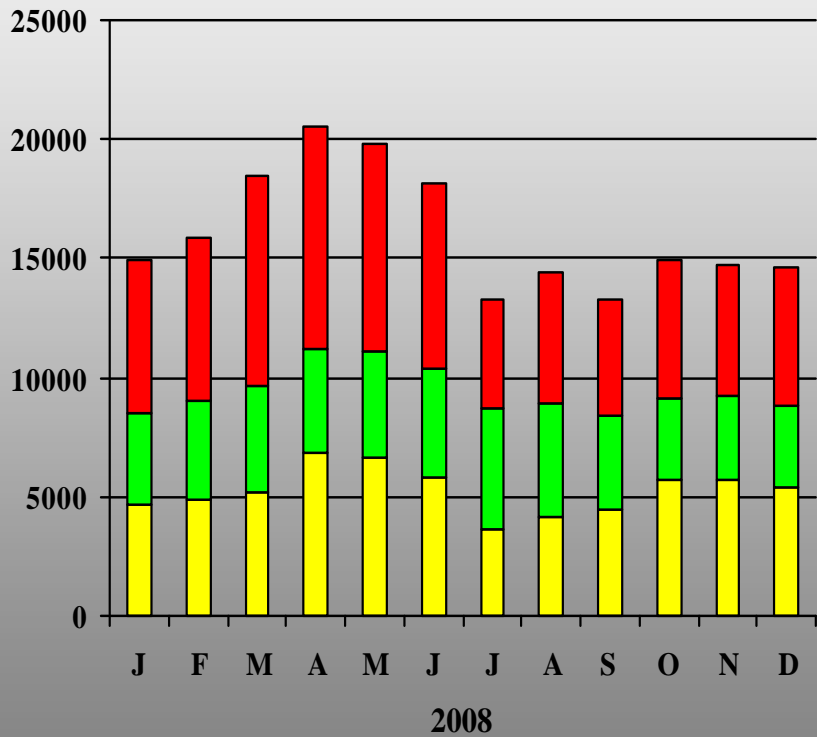


# Airport Monthly Operations Count





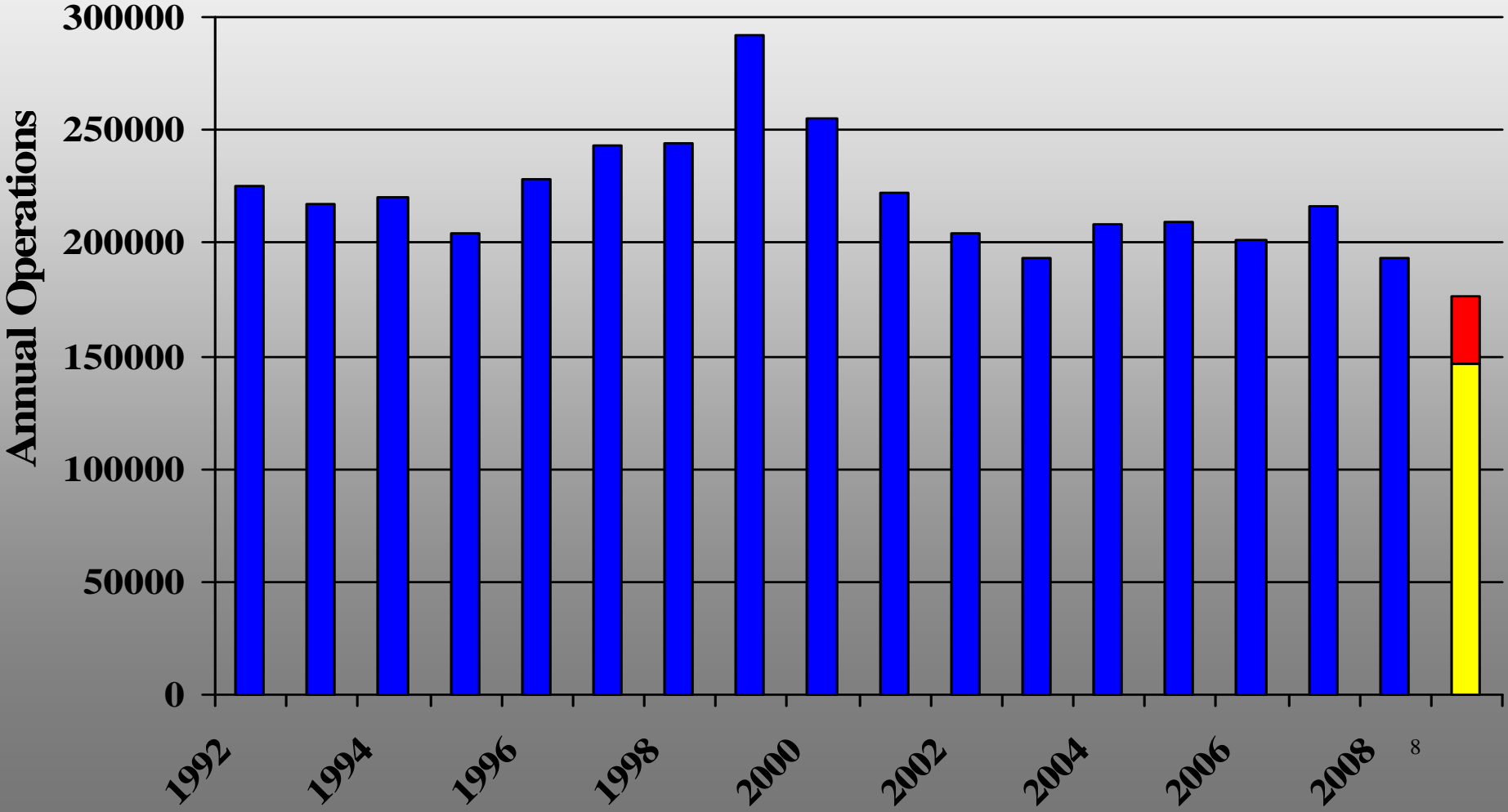
# Traffic Breakdown





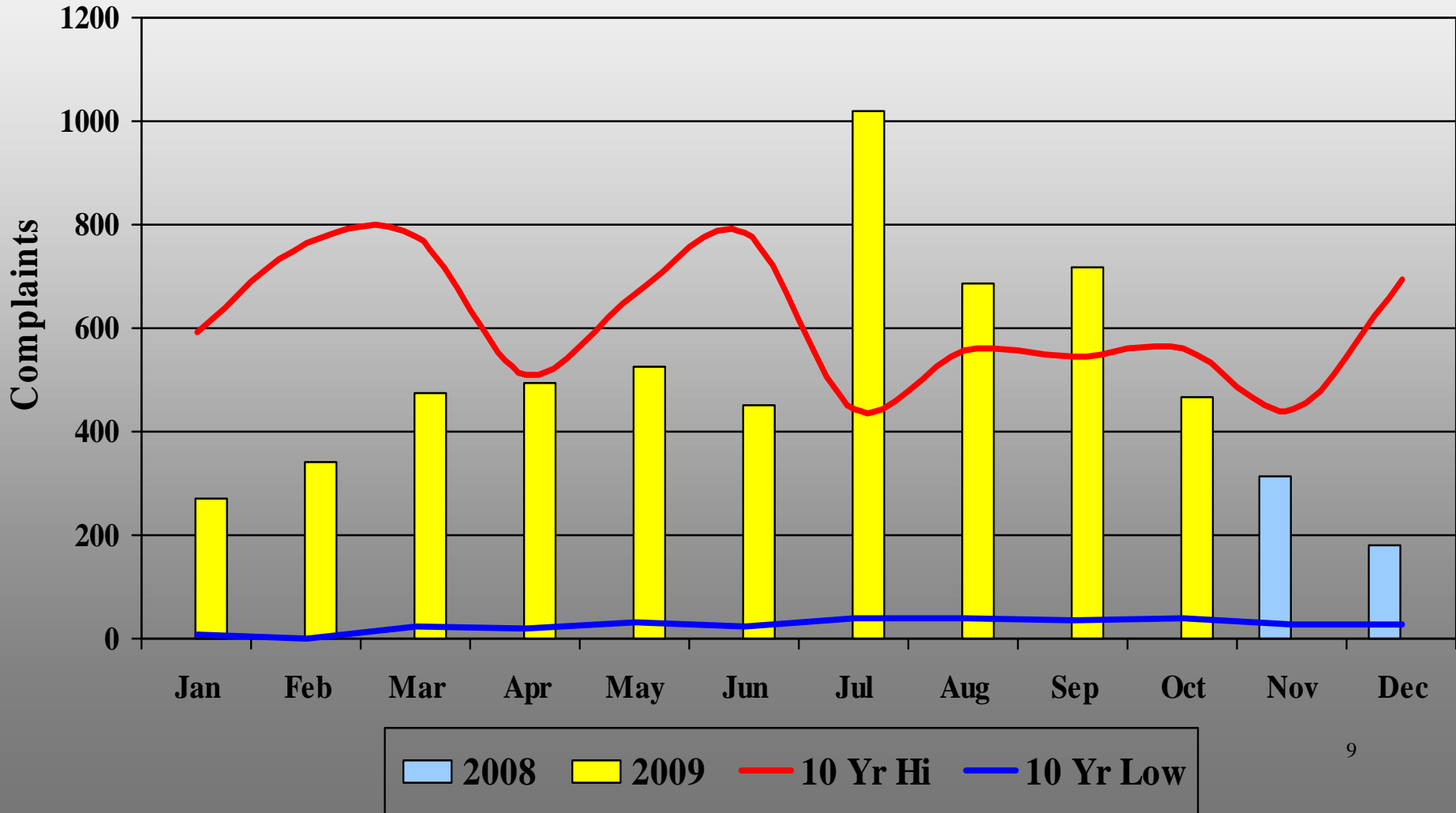
# Annual Operations Count

■ **Operations**
■ **Actual**
■ **Projected**





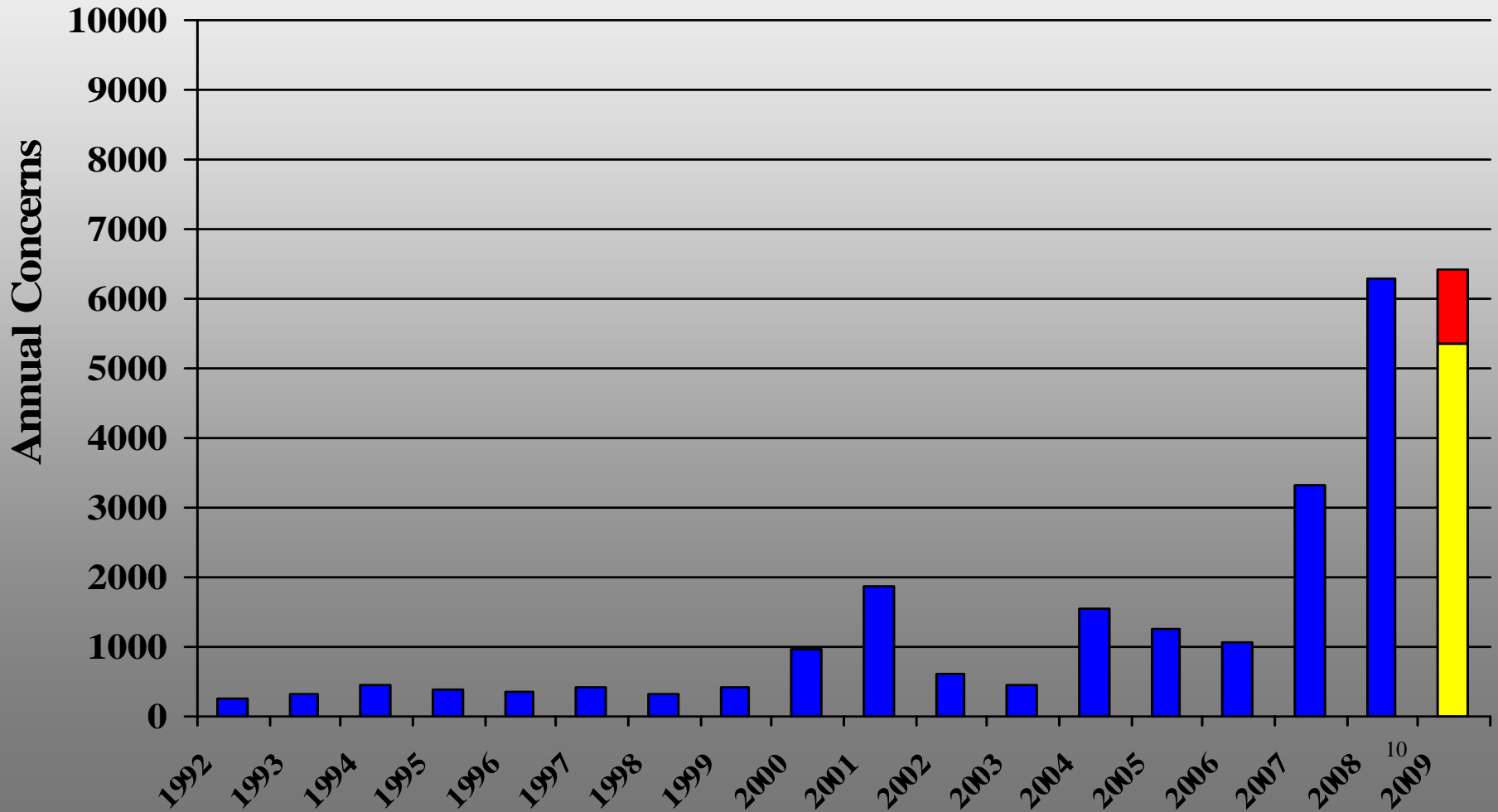
# Monthly Concerns





# Annual Concerns

■ Concerns 
 ■ Actual 
 ■ Projected



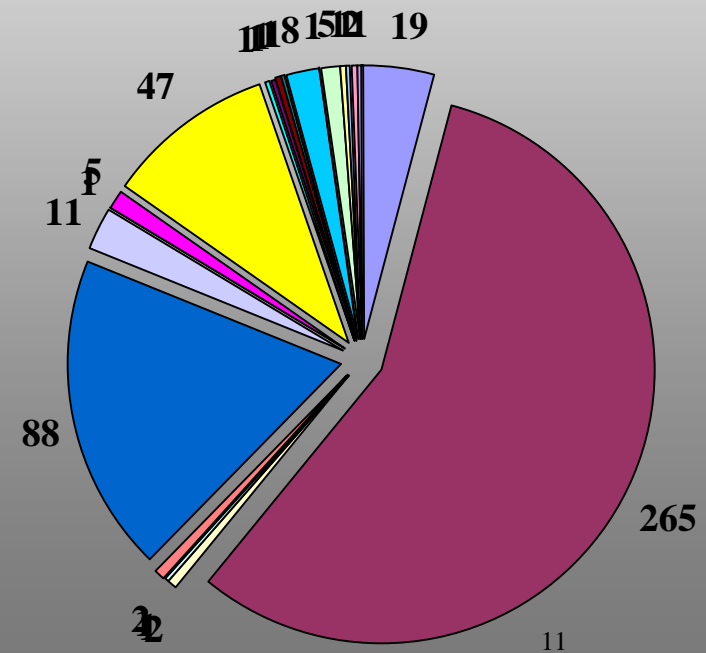
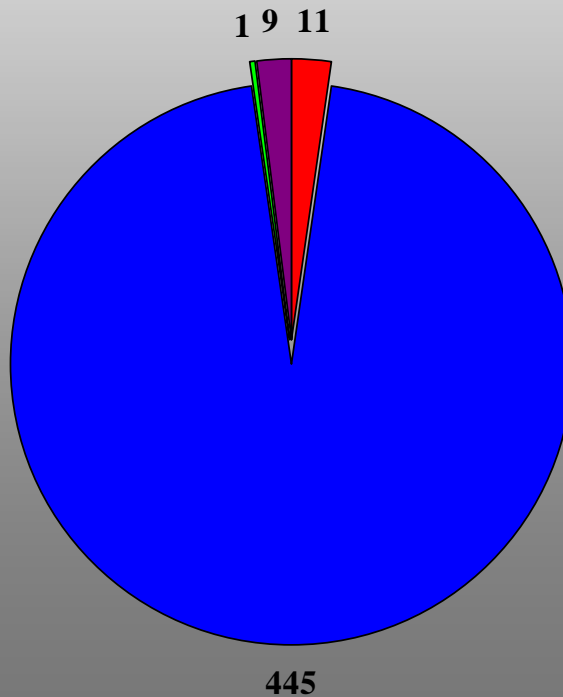
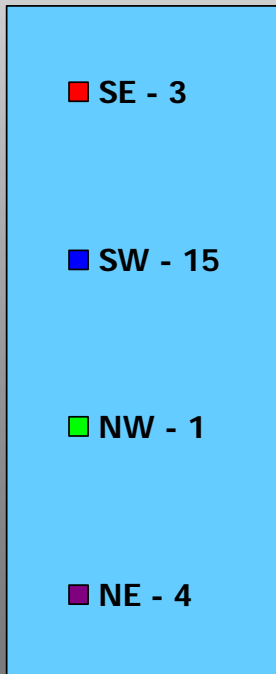


# Location and Caller Breakout

**October 2009**

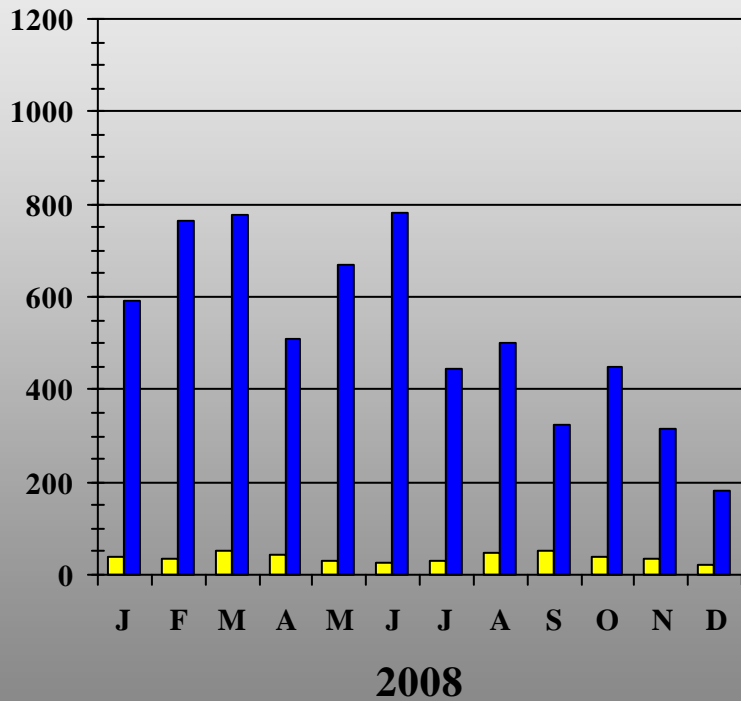
**Quadrant Chart  
23 Callers Total  
95% of Complaints From SW**

**86% of Reports  
From 3 Callers**

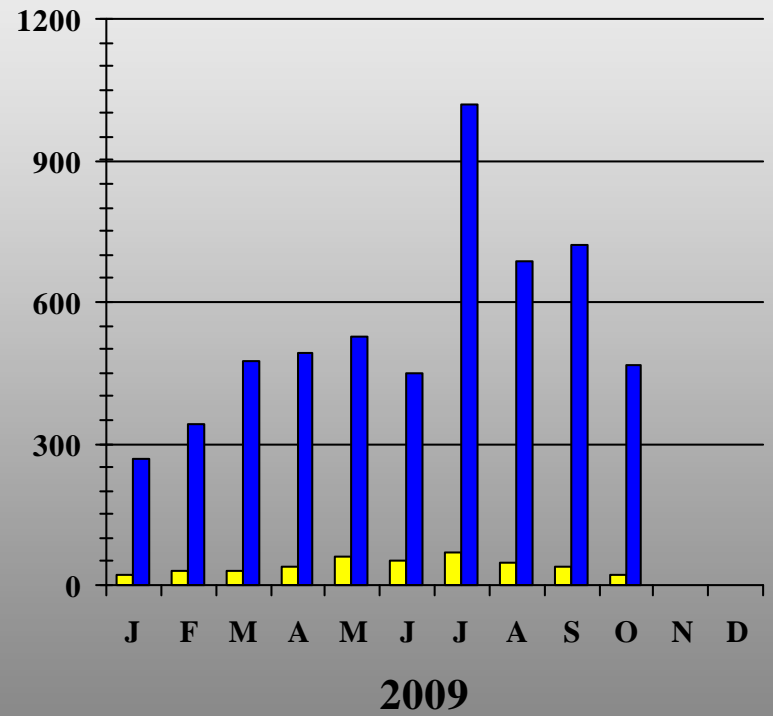




# Caller & Complaint Comparison



■ Callers ■ Complaints

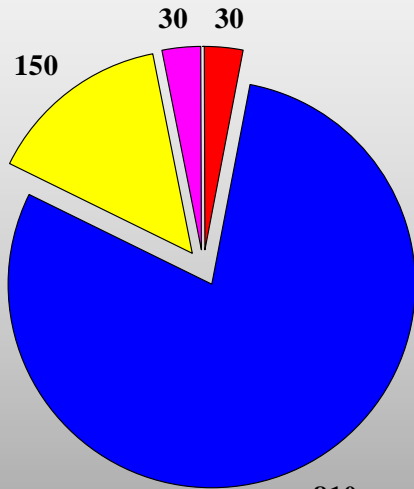


■ Callers ■ Complaints

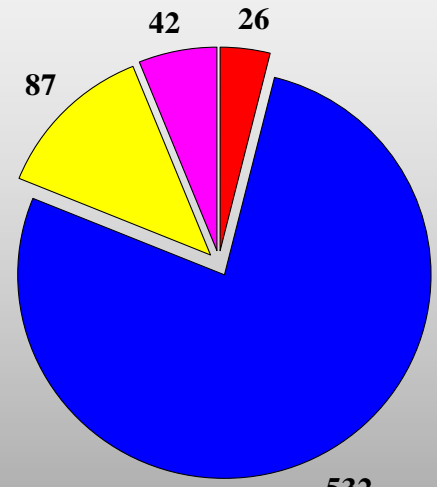


# Reports by Aircraft Type

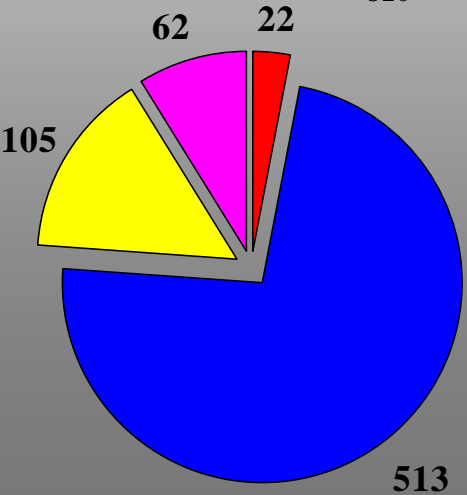
July 2009



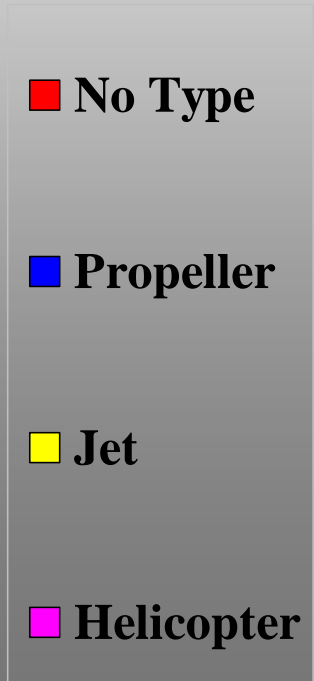
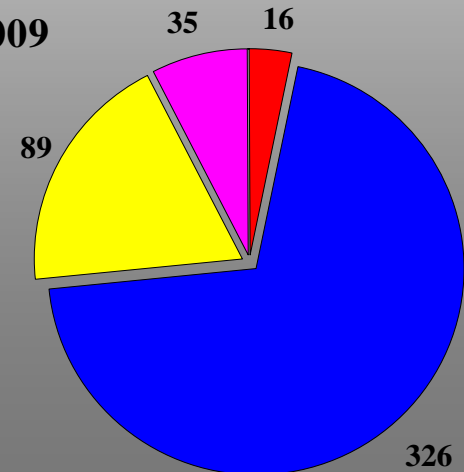
August 2009



September 2009



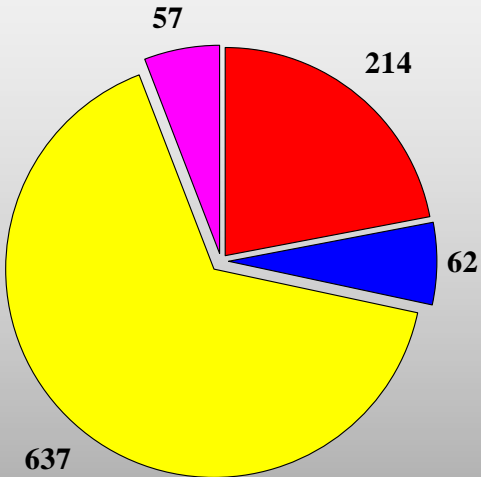
October 2009



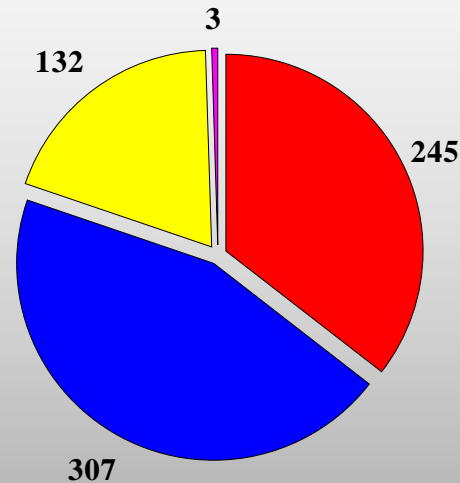


# Reports by Category

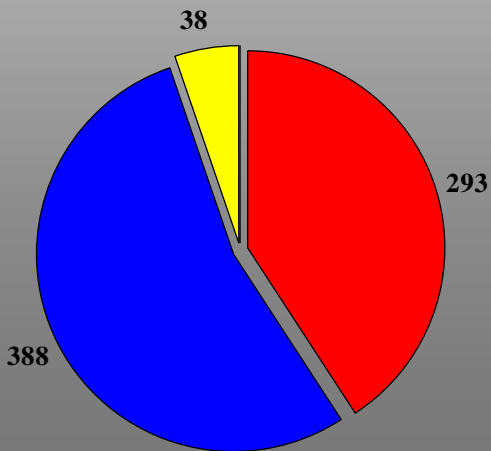
July 2009



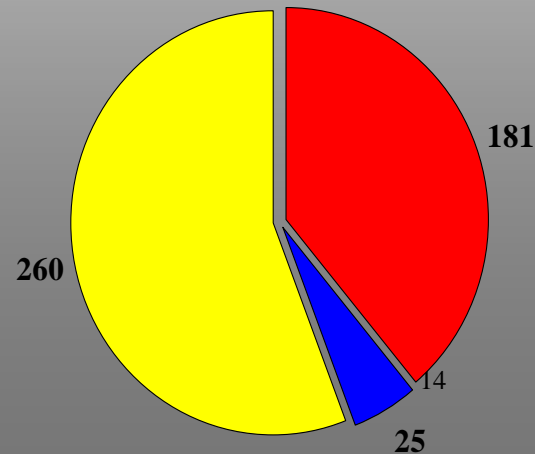
August 2009



September 2009



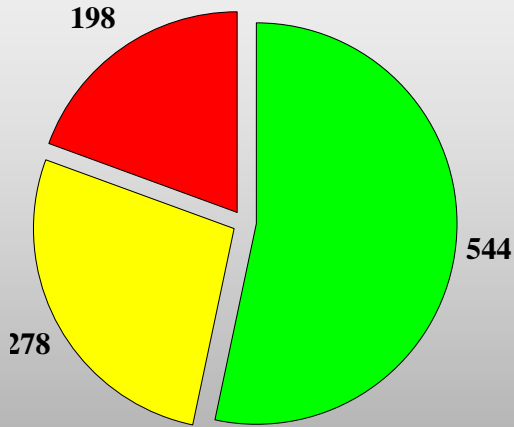
October 2009



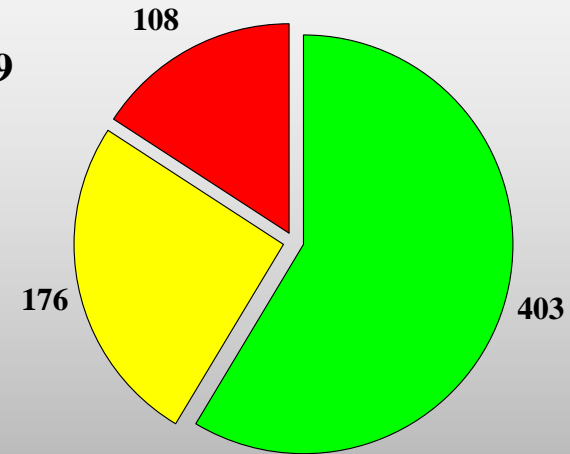


# Reports by Time of Day

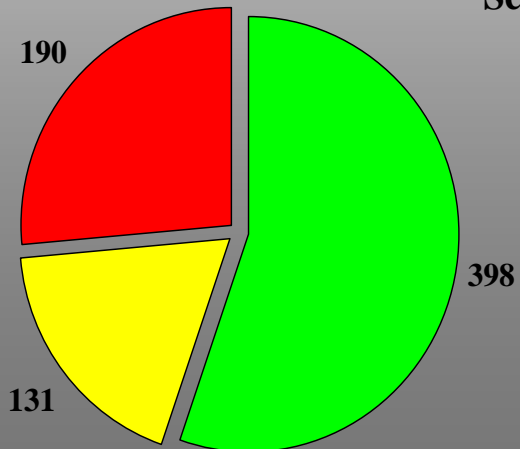
July 2009



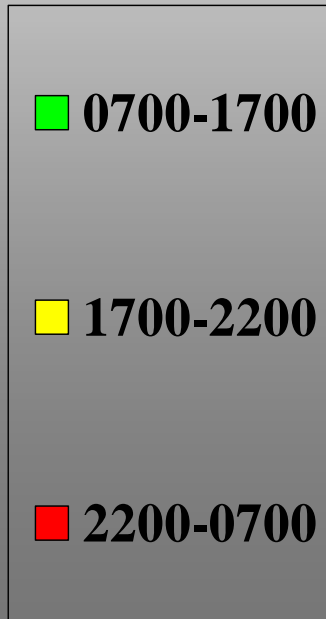
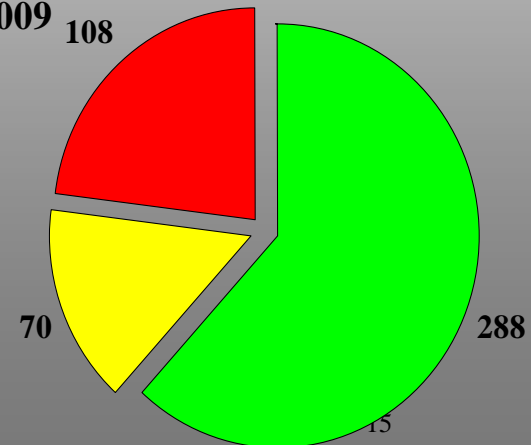
August 2009



September 2009

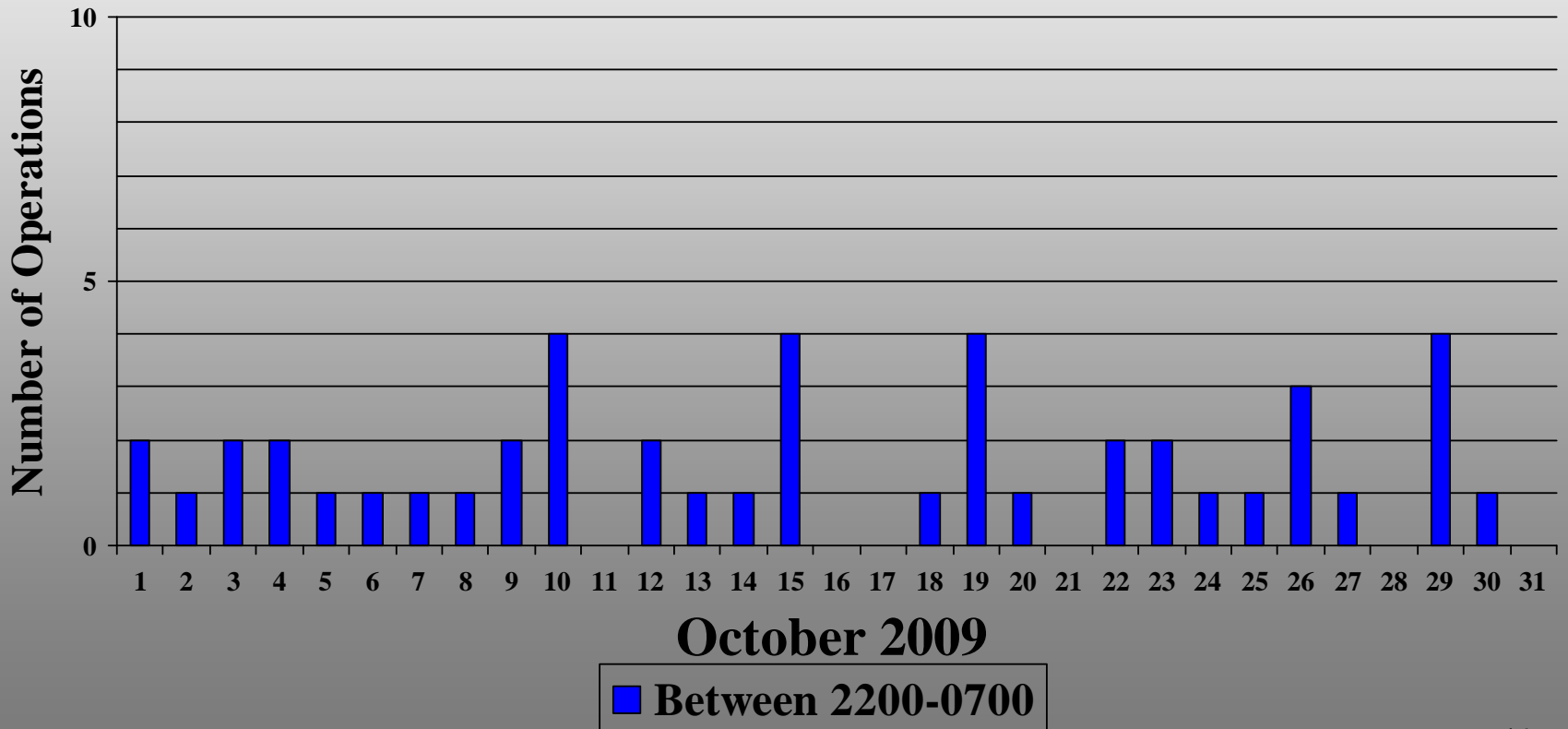


October 2009



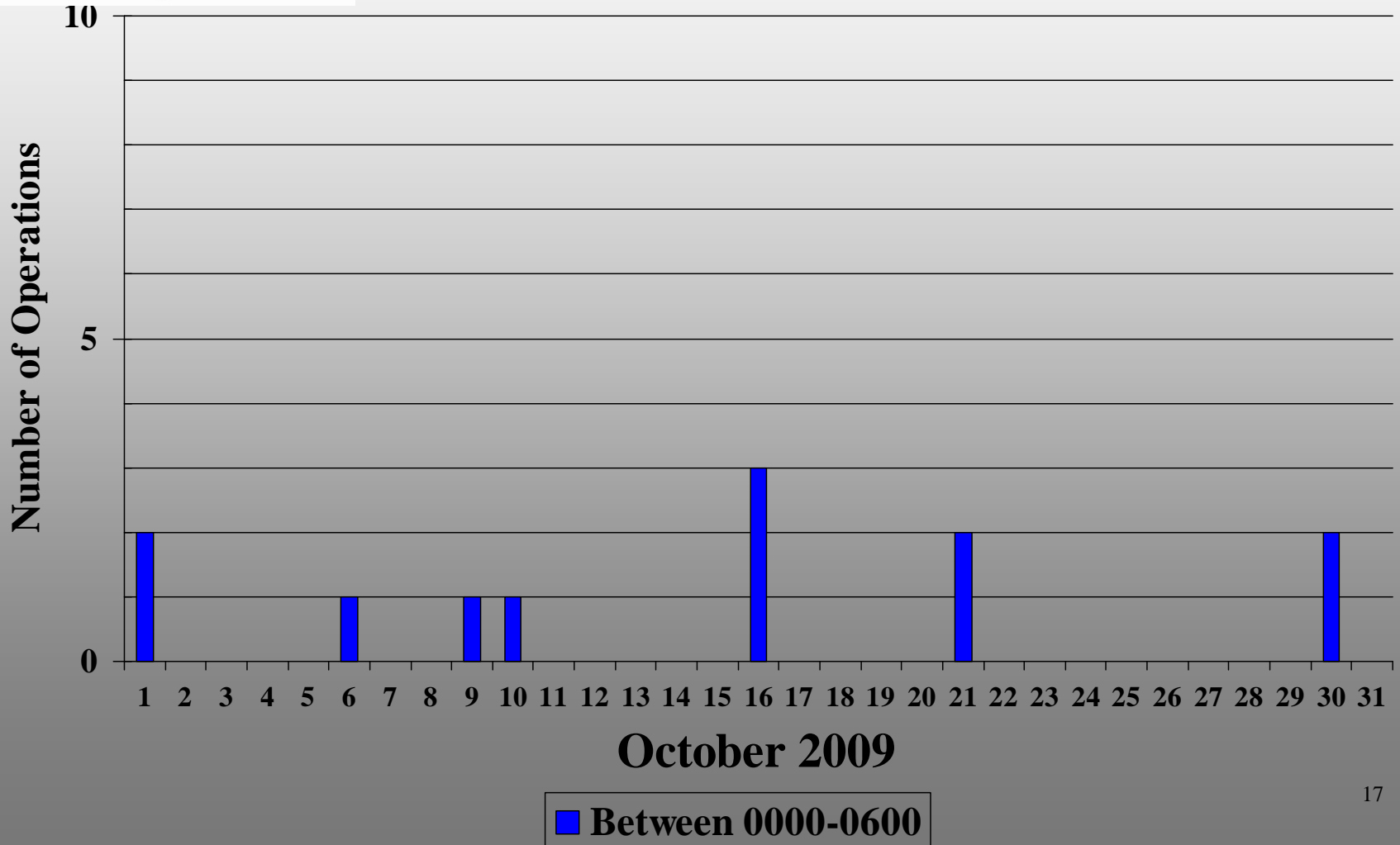


# Jet Night Flights





# Prop Night Flights





Community Noise Concern Index **CNCI**/1000

People With Concerns Each Month

NINA Population

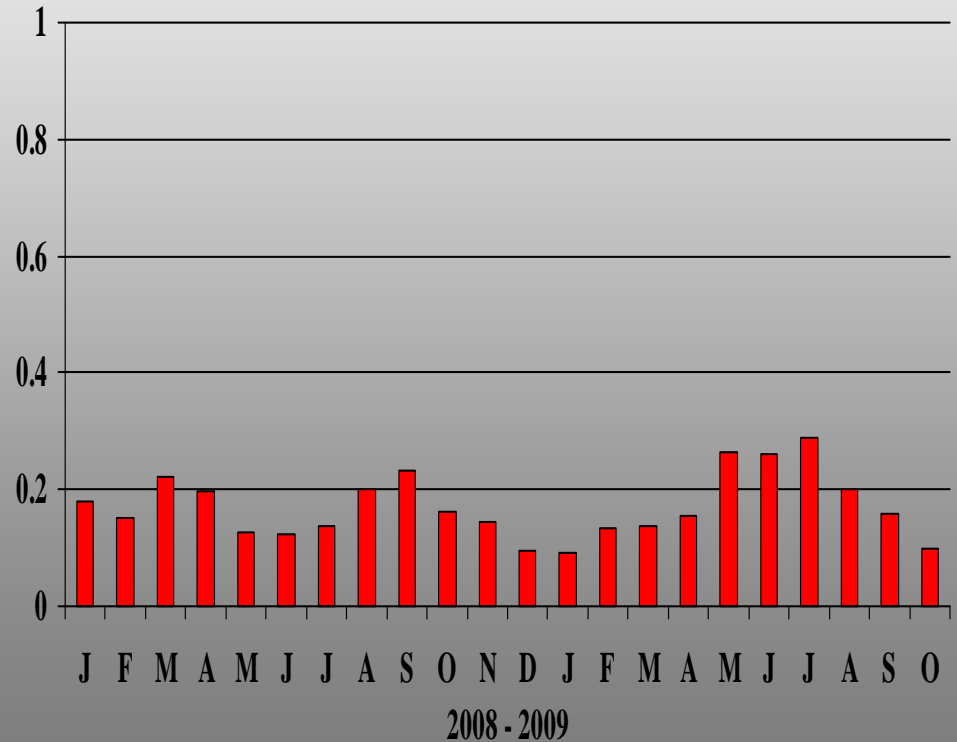


23 People

229,870(NINA Pop.)

= 0.10/1000 **CNCI**

**CNCI**





Palomar Airport Operational Benefit Index- PA **OBI**

Operations  $\times$  Average People  
Per Aircraft

---

NINA Population



13,724 Ops  $\times$  3.26 People  
Per Aircraft

---

229,870(Nina Pop.)

= 194.63/1000 **OBI**

**OBI**

