

McClellan-Palomar

Fly Friendly

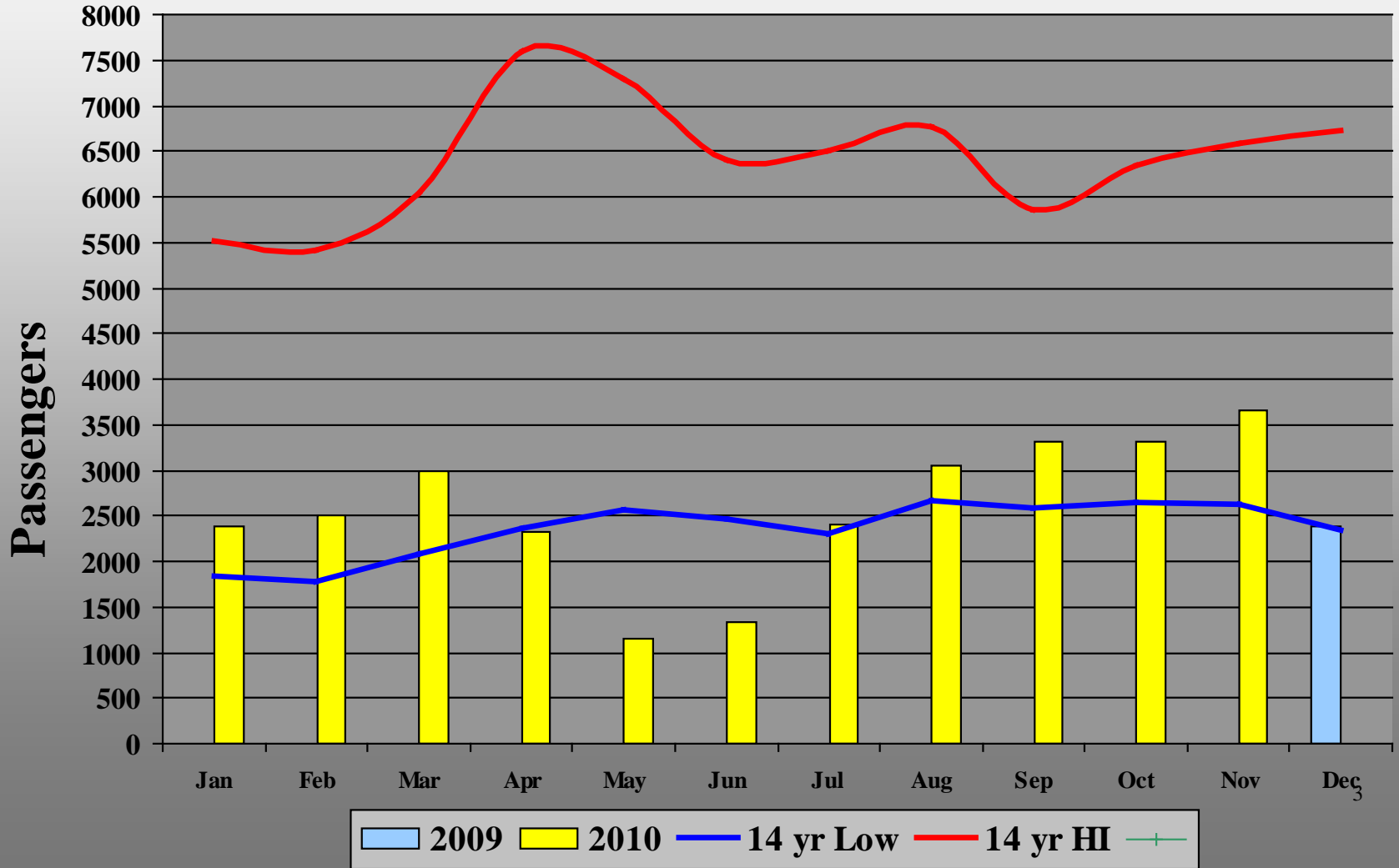
A photograph of a white private jet, likely a Gulfstream G650, parked on an asphalt tarmac. The aircraft is viewed from a low angle, showing its wings, engines, and tail. The background features a sunset sky with orange and pink hues, and airport buildings and a control tower are visible in the distance. The overall scene is dimly lit, suggesting dusk or dawn.

*McClellan-Palomar Airport
Monthly Airport Performance Report*

*November
2010*

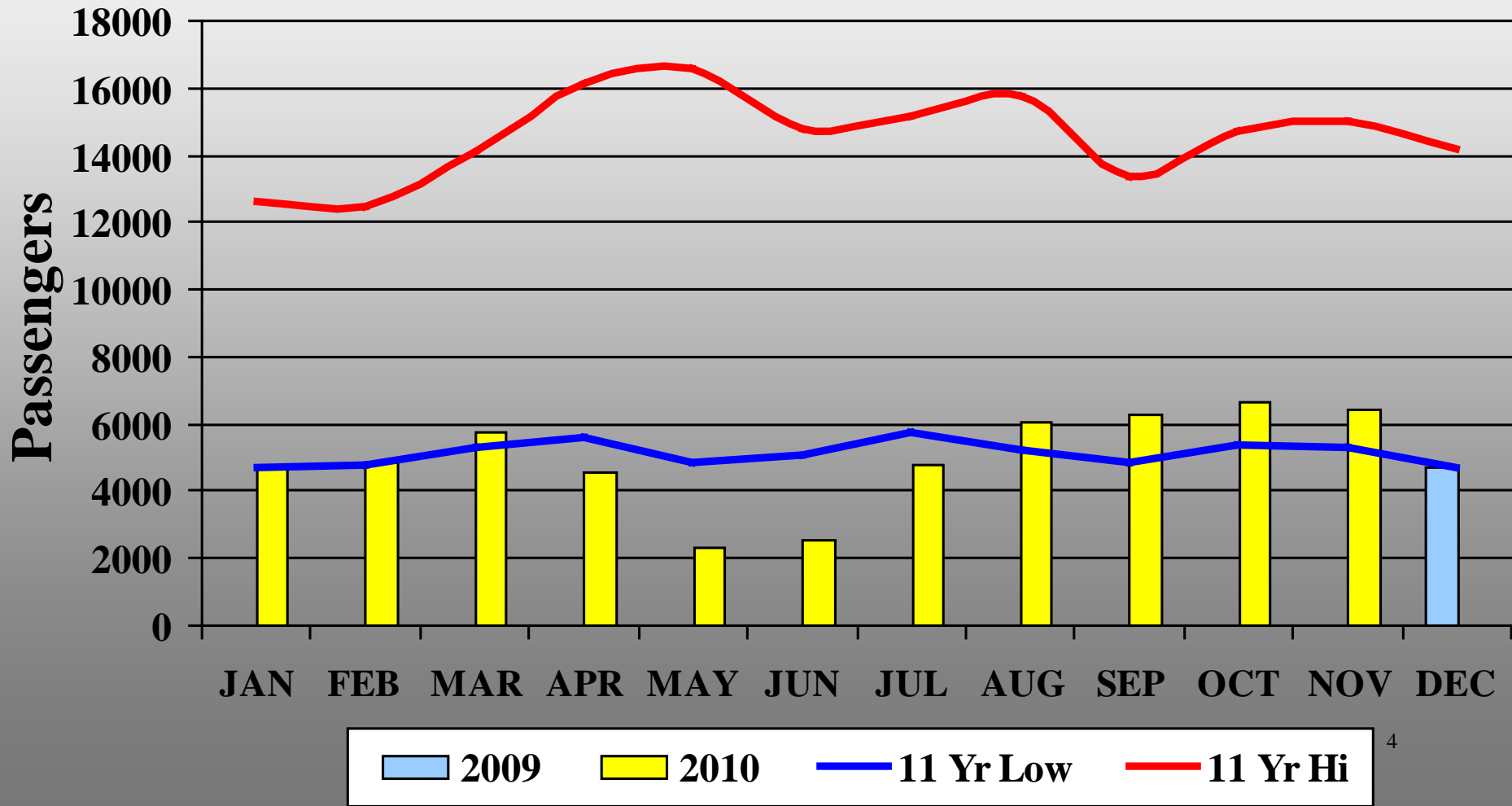


Monthly Air Carrier Enplanements





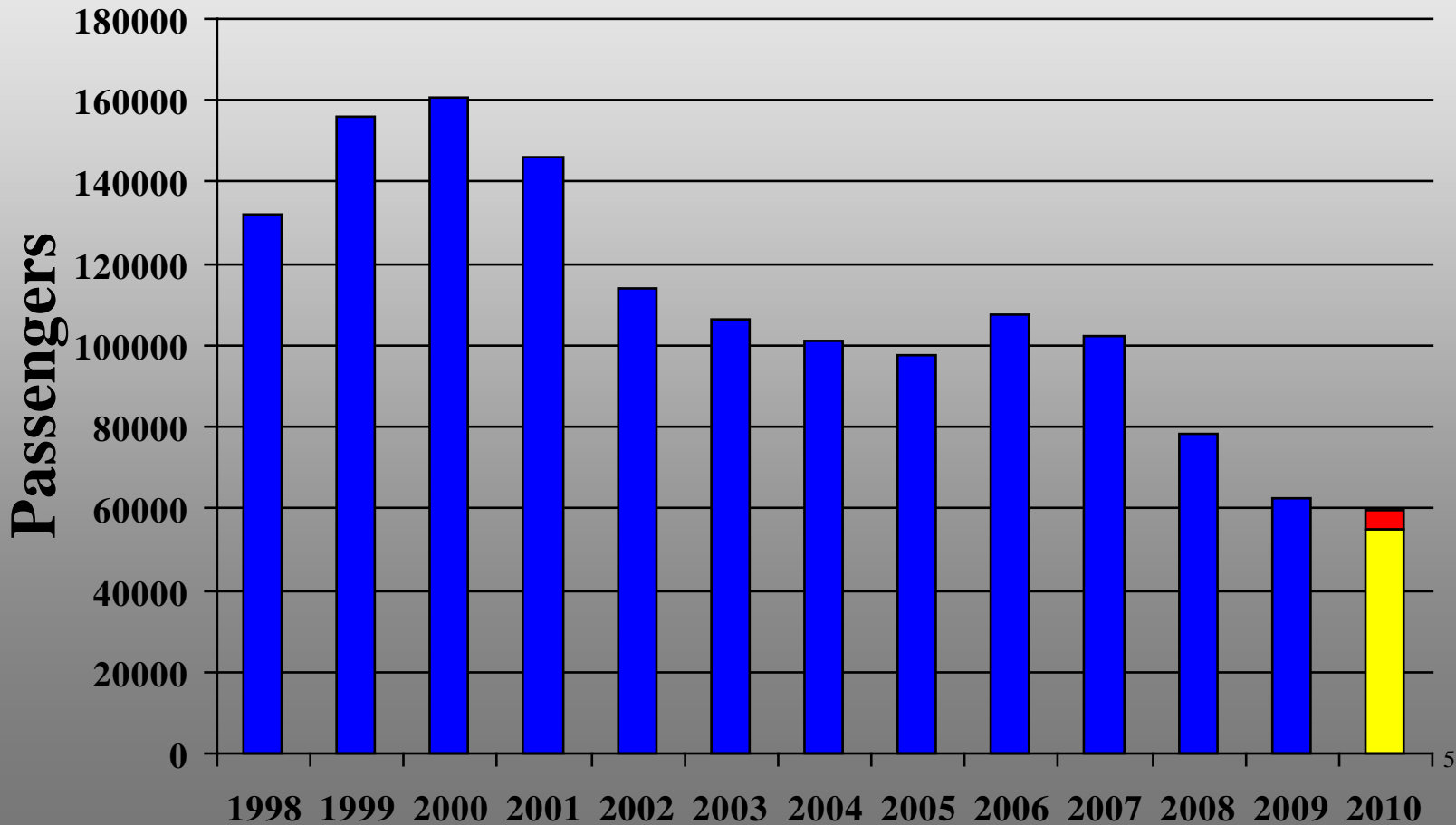
Air Carrier Total Monthly Passengers





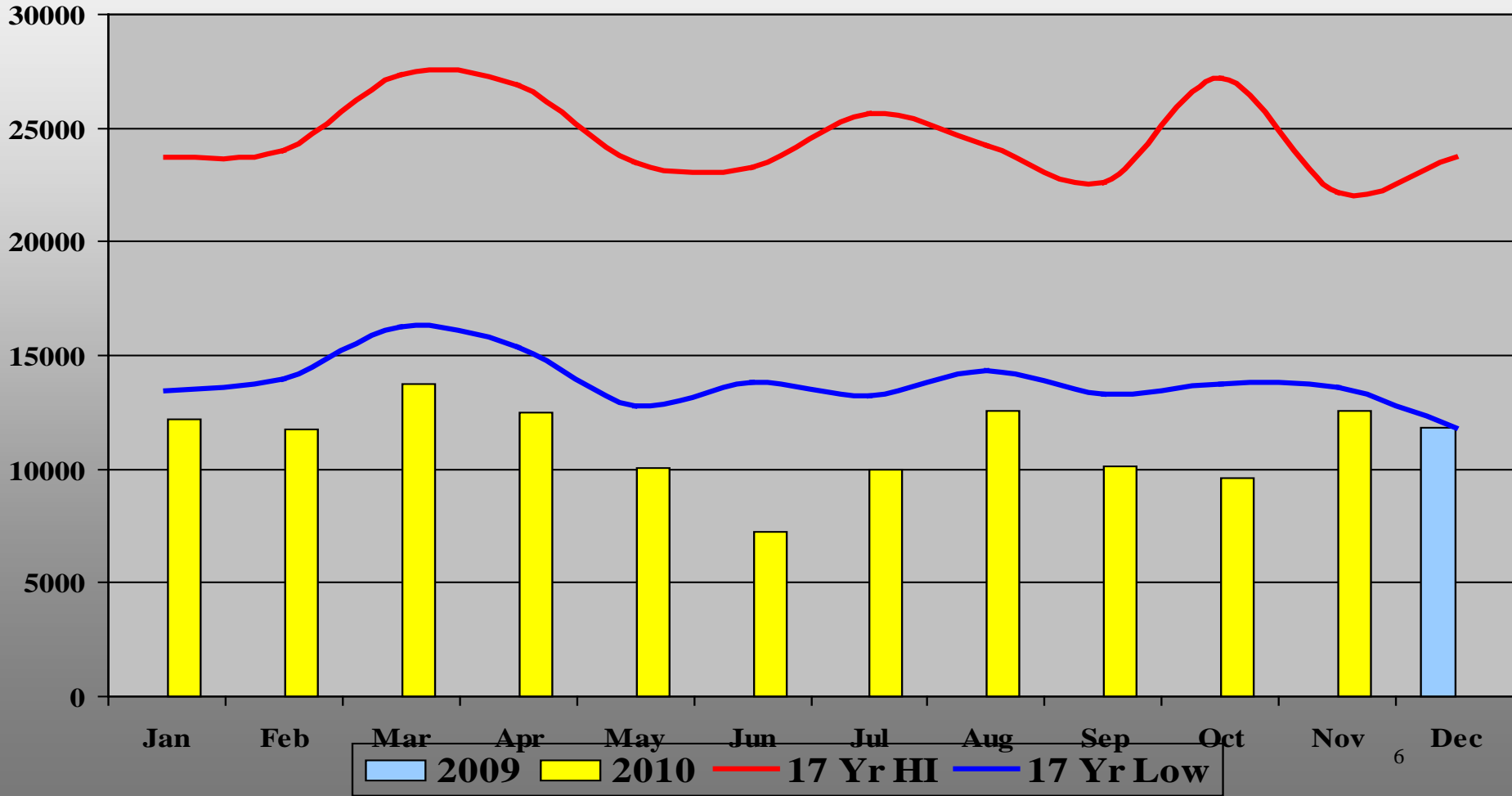
Annual Air Carrier Passenger Terminal Throughput

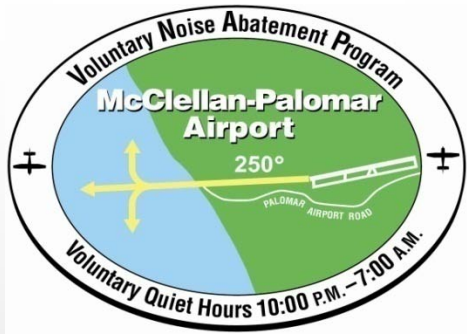
■ Passenger
 ■ Actual
 ■ Projected



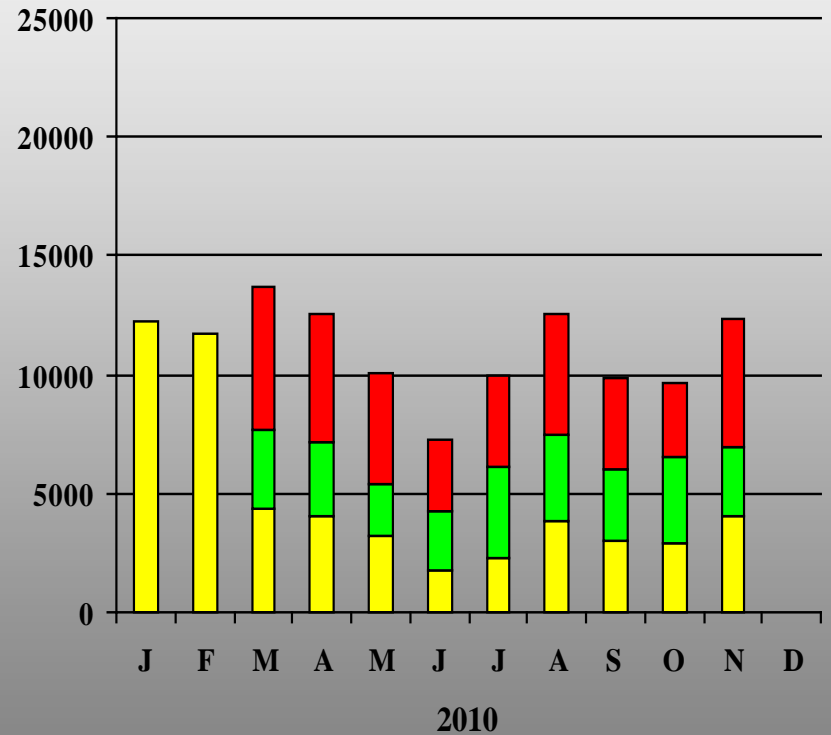
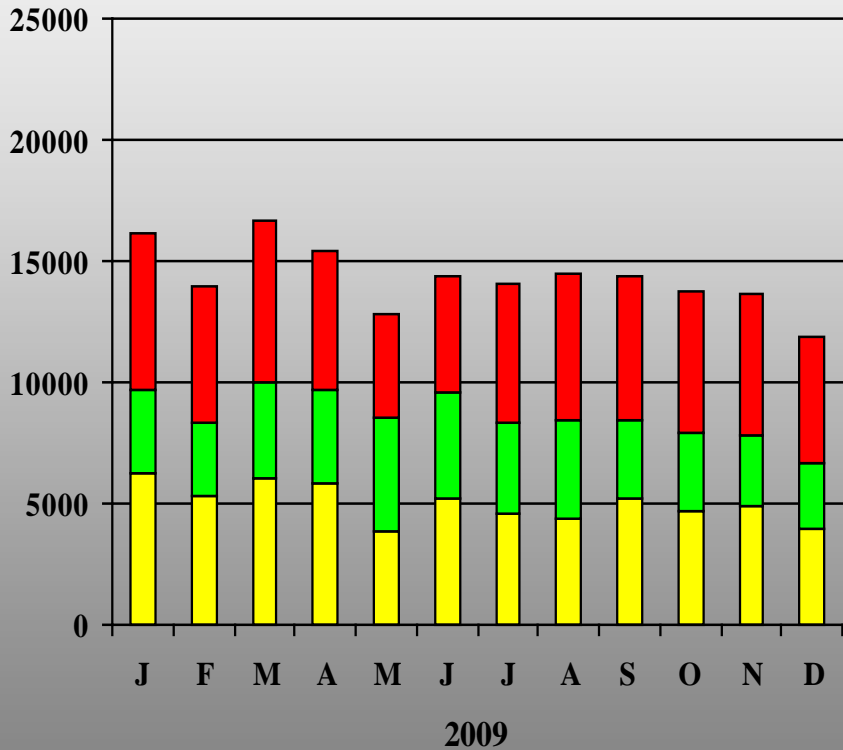


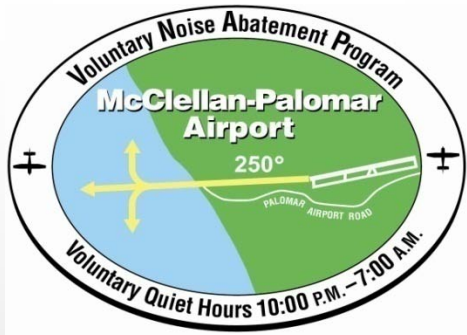
Airport Monthly Operations Count





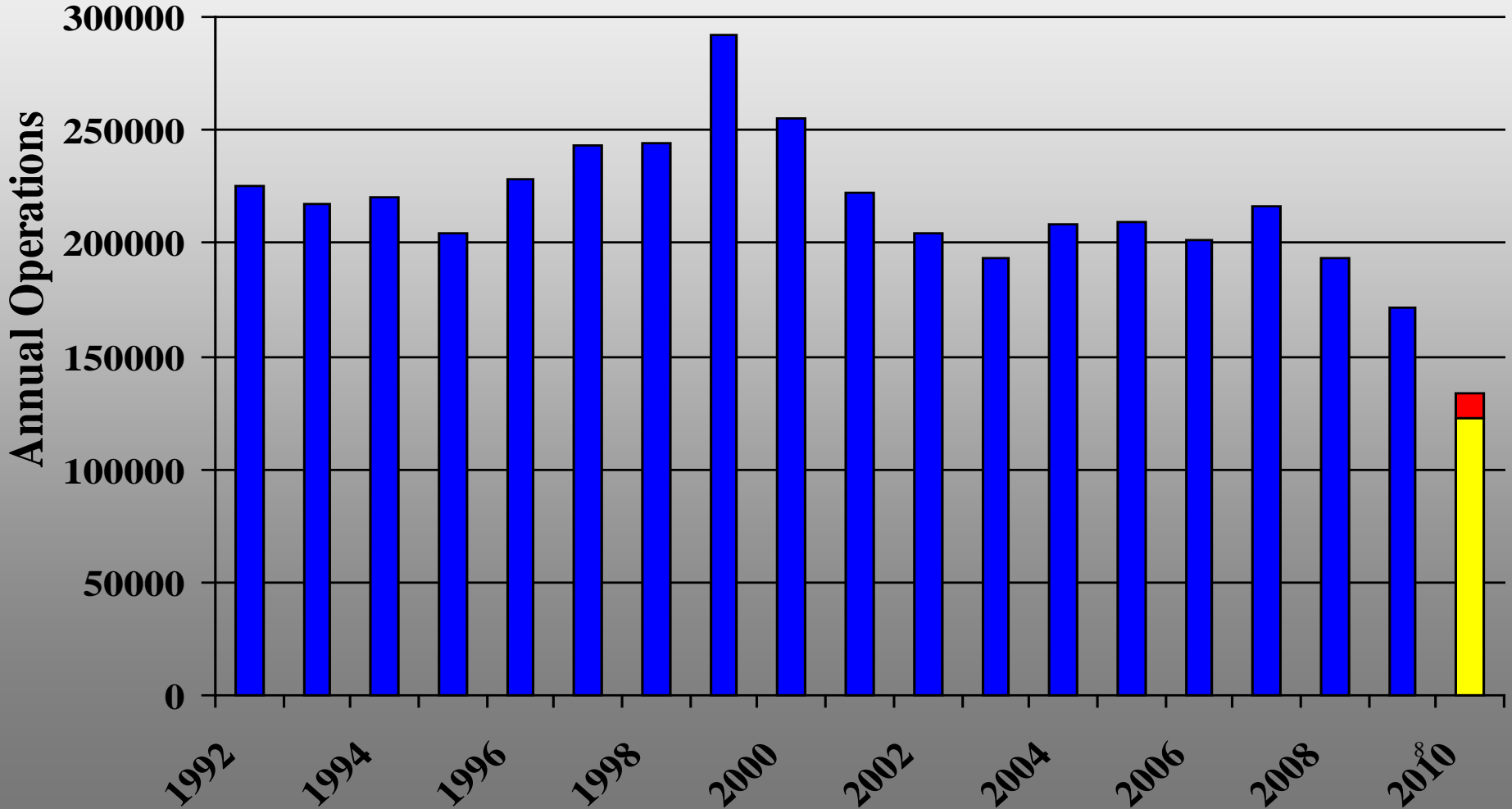
Traffic Breakdown

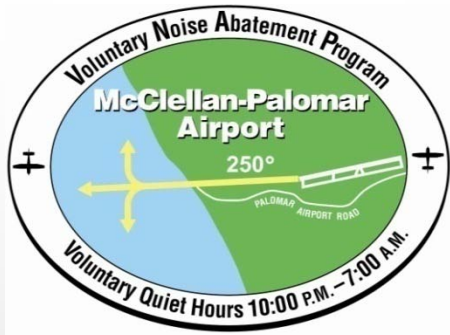




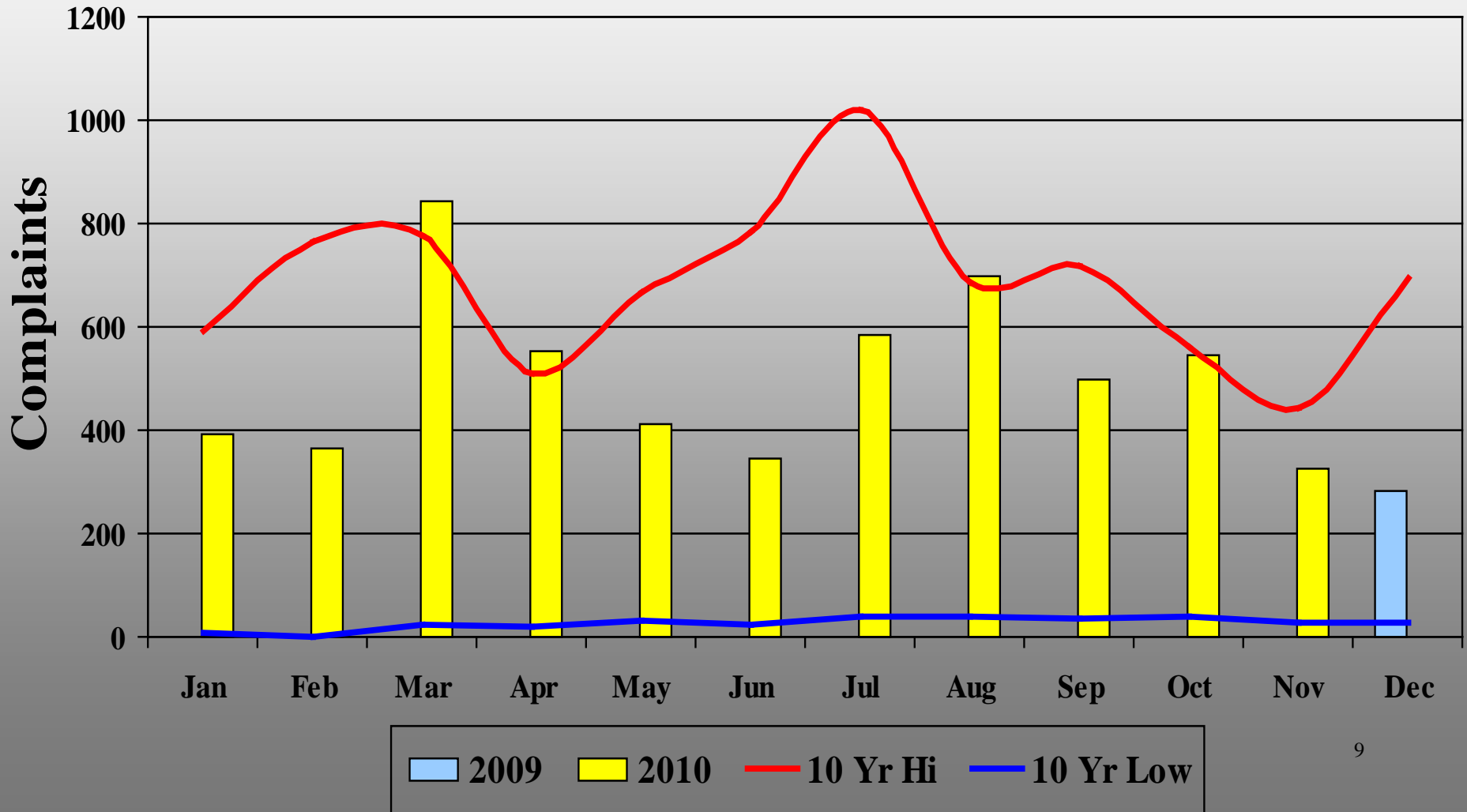
Annual Operations Count

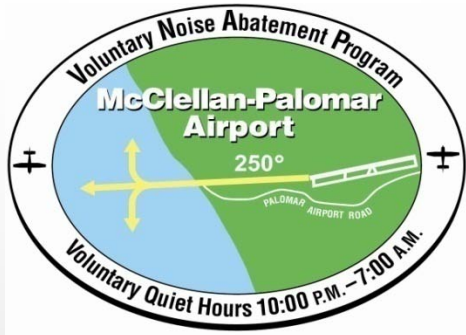
■ **Operations**
■ **Actual**
■ **Projected**





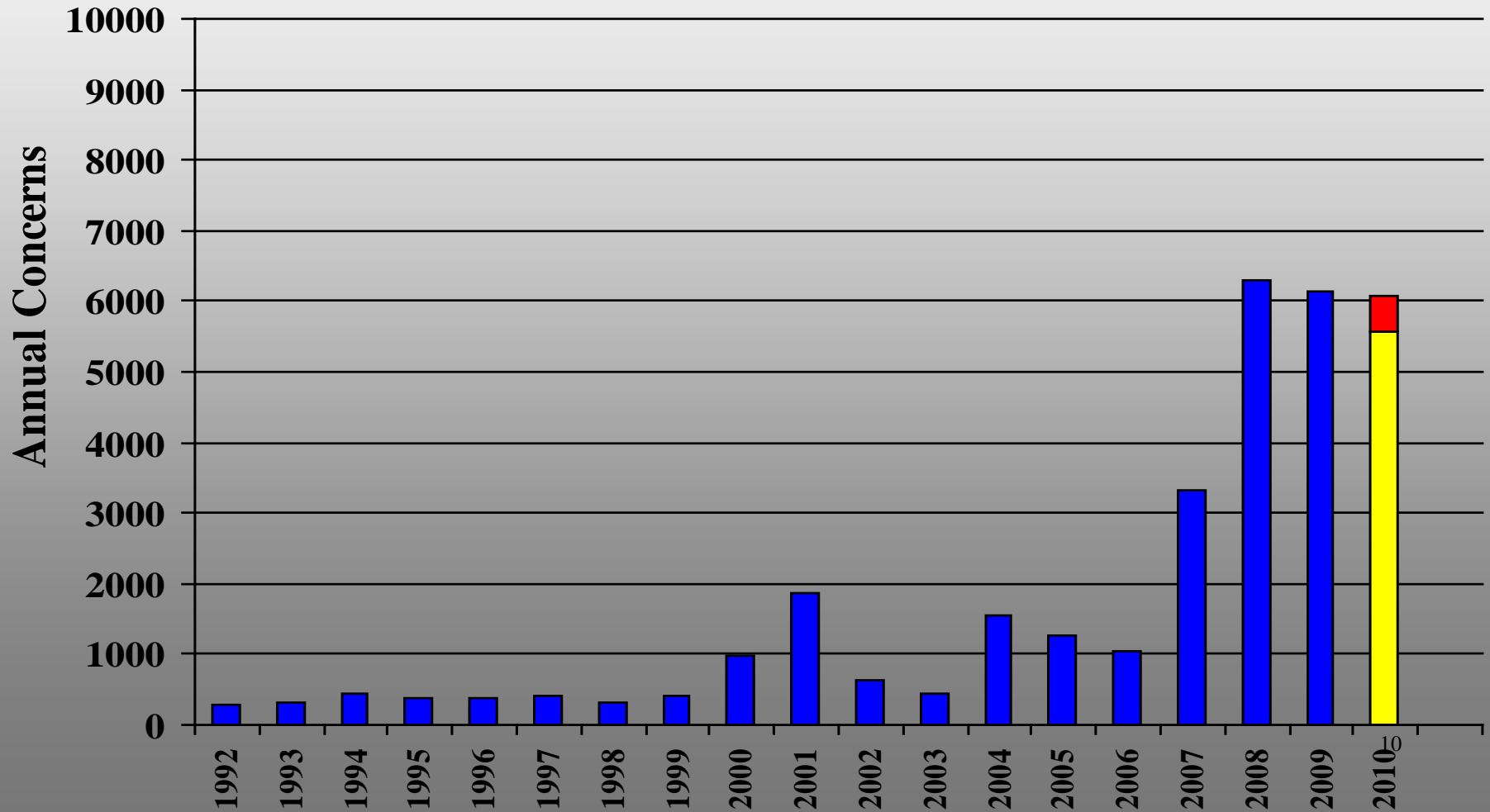
Monthly Concerns

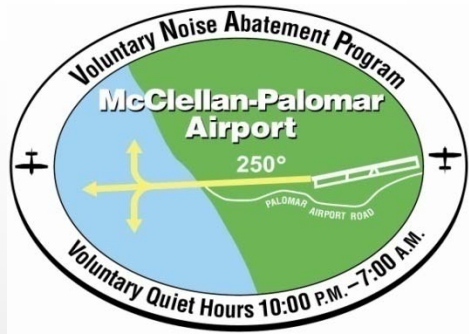




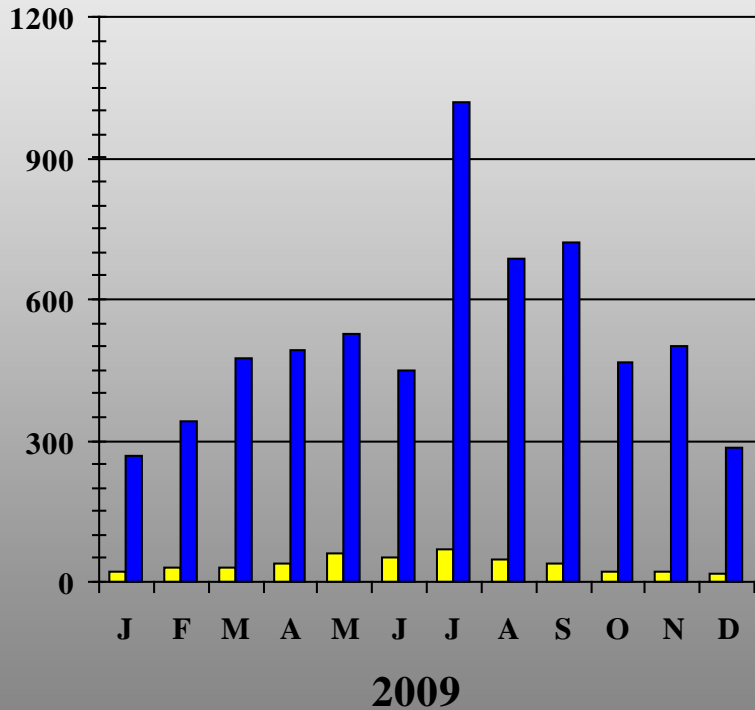
Annual Concerns

■ Concerns ■ Actual ■ Projected

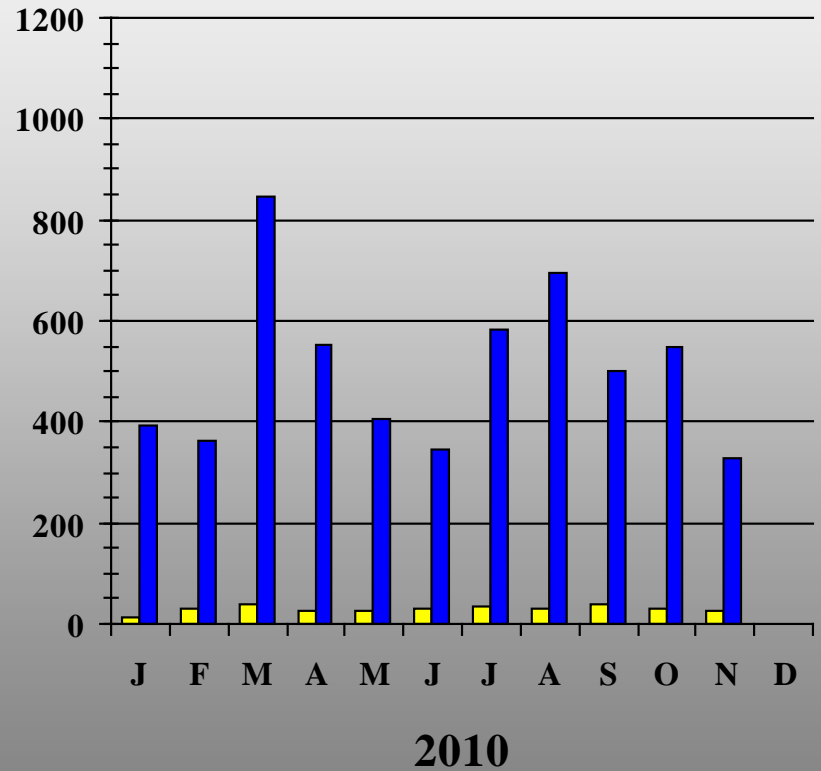




Caller & Complaint Comparison



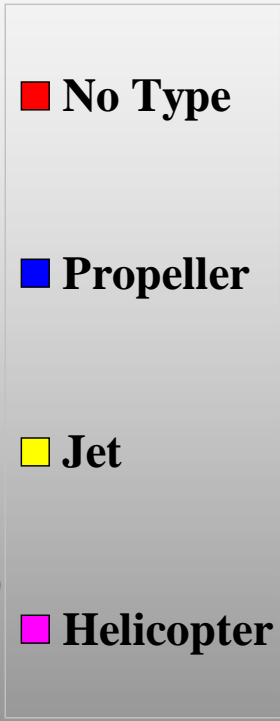
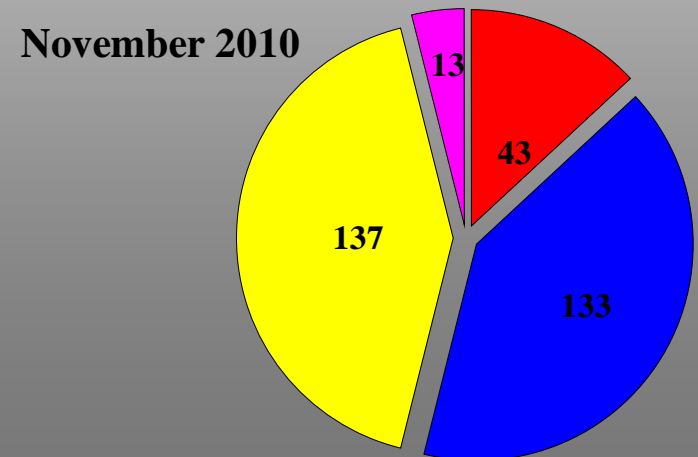
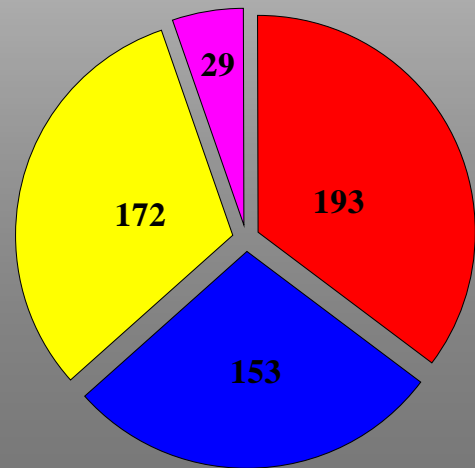
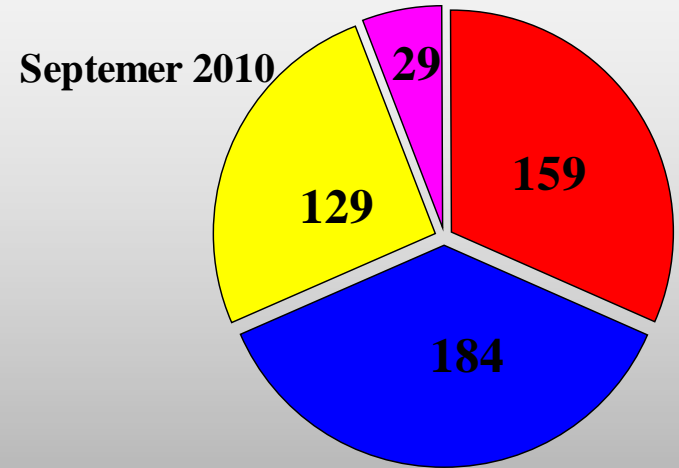
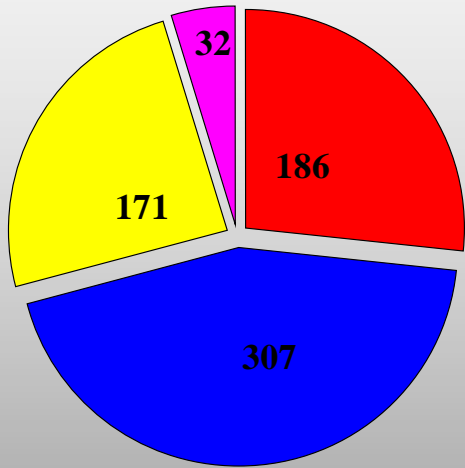
■ Callers ■ Complaints

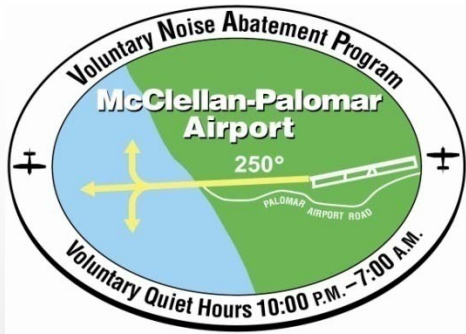


■ Callers ■ Complaints



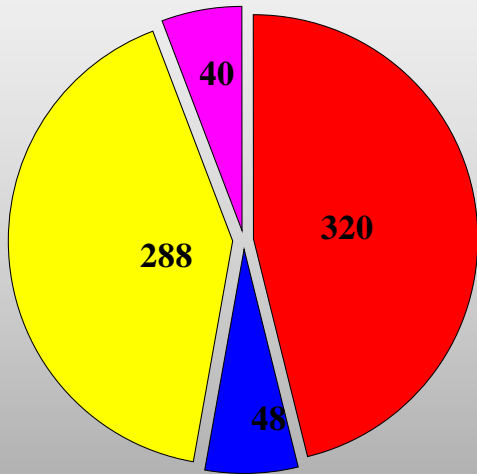
Reports by Aircraft Type



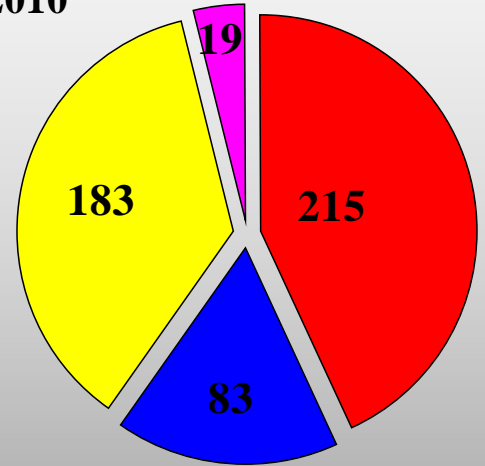


Reports by Category

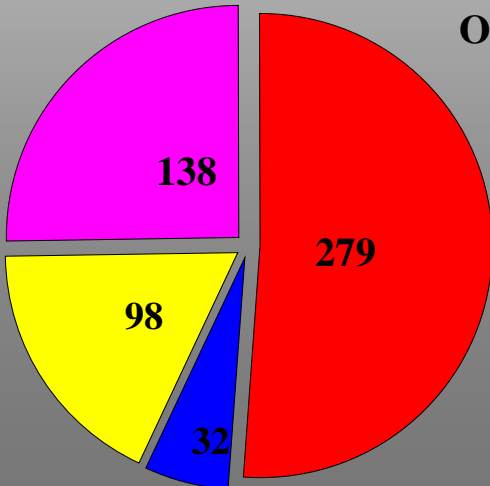
August 2010



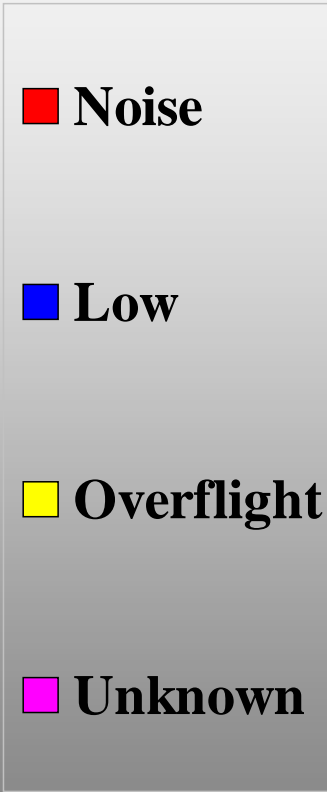
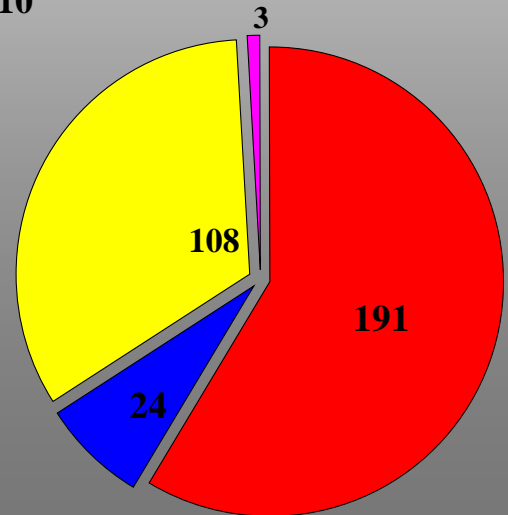
September 2010



October 2010

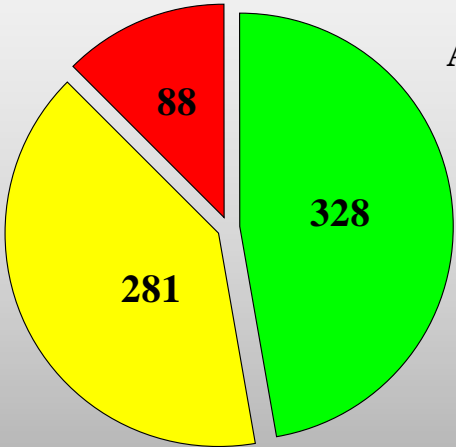


November 2010

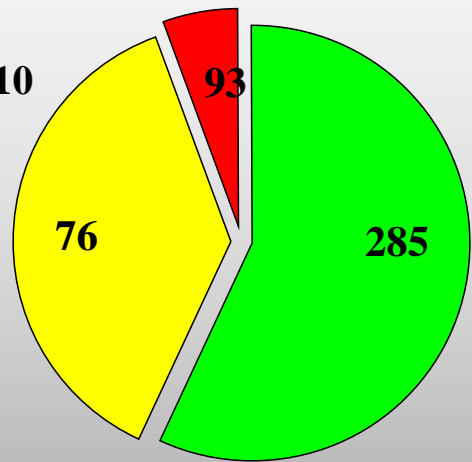




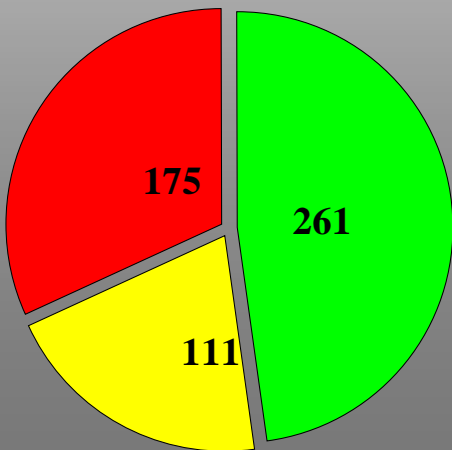
Reports by Time of Day



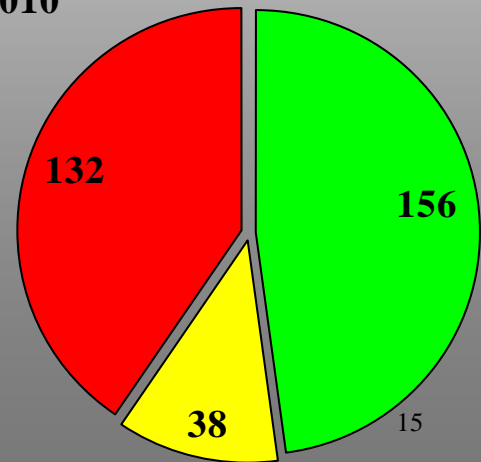
August 2010



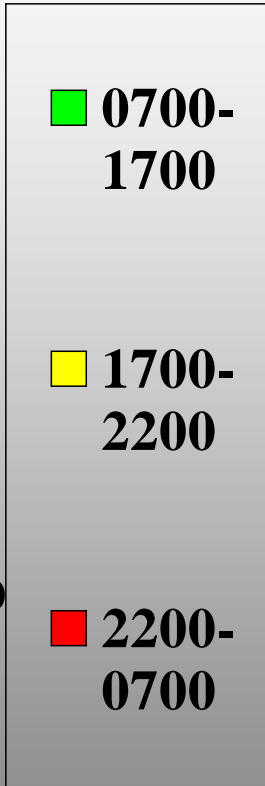
September 2010

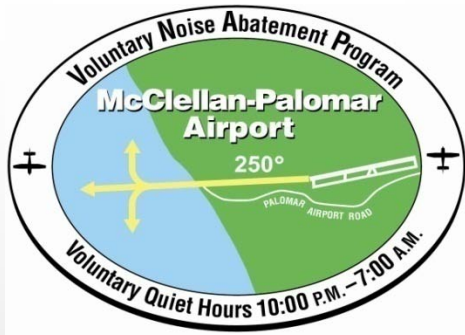


October 2010

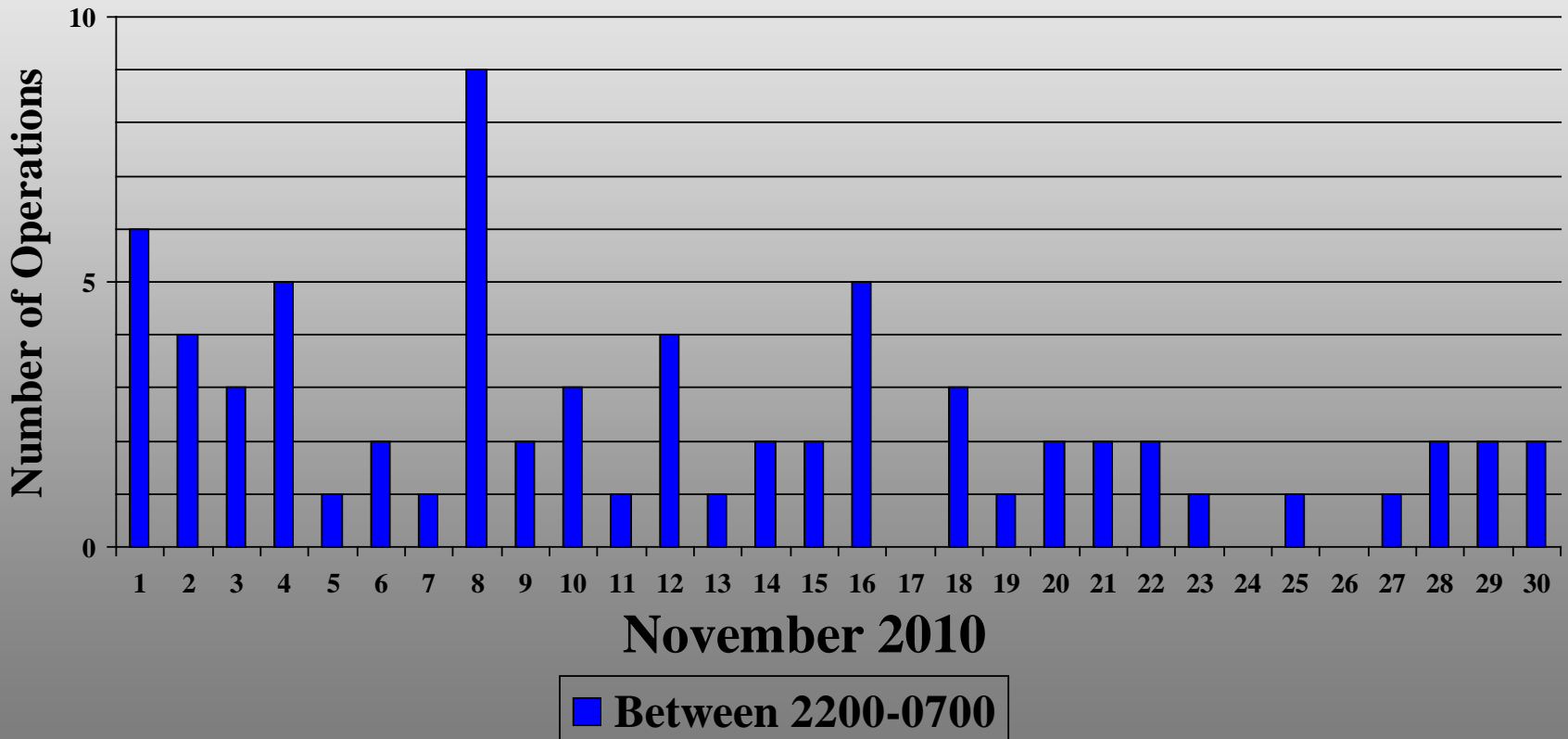


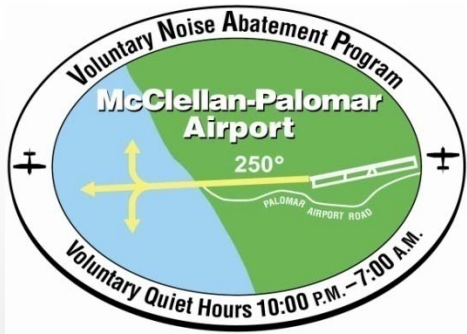
November 2010



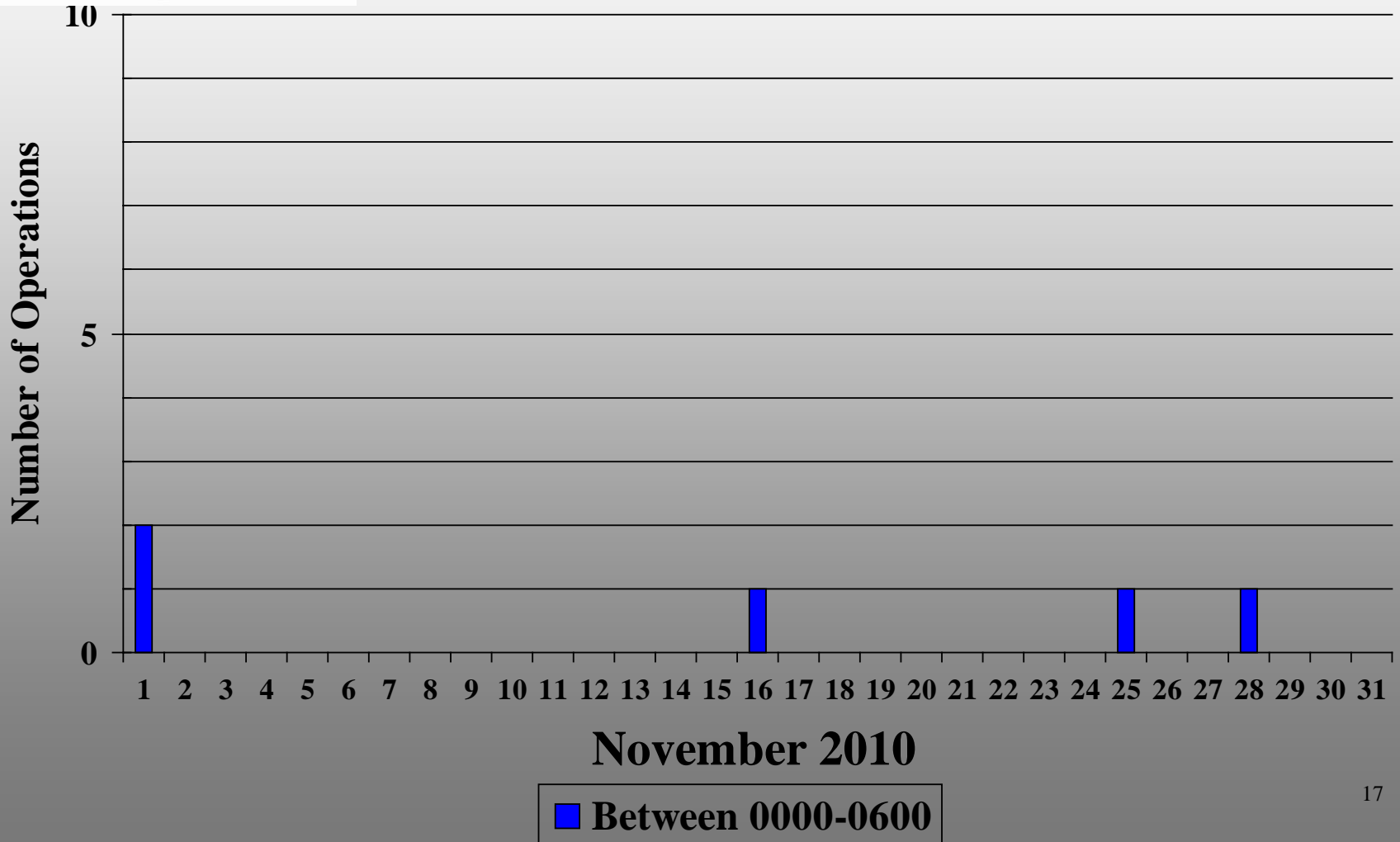


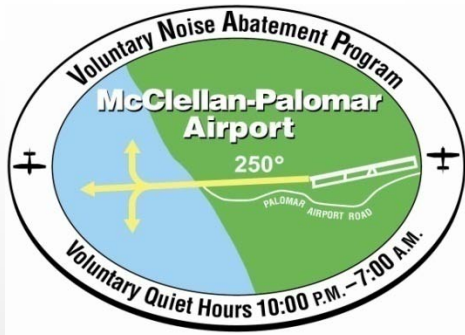
Jet Night Flights





Prop Night Flights





Community Noise Concern Index **CNCI/1000**

People With Concerns Each Month

NINA Population

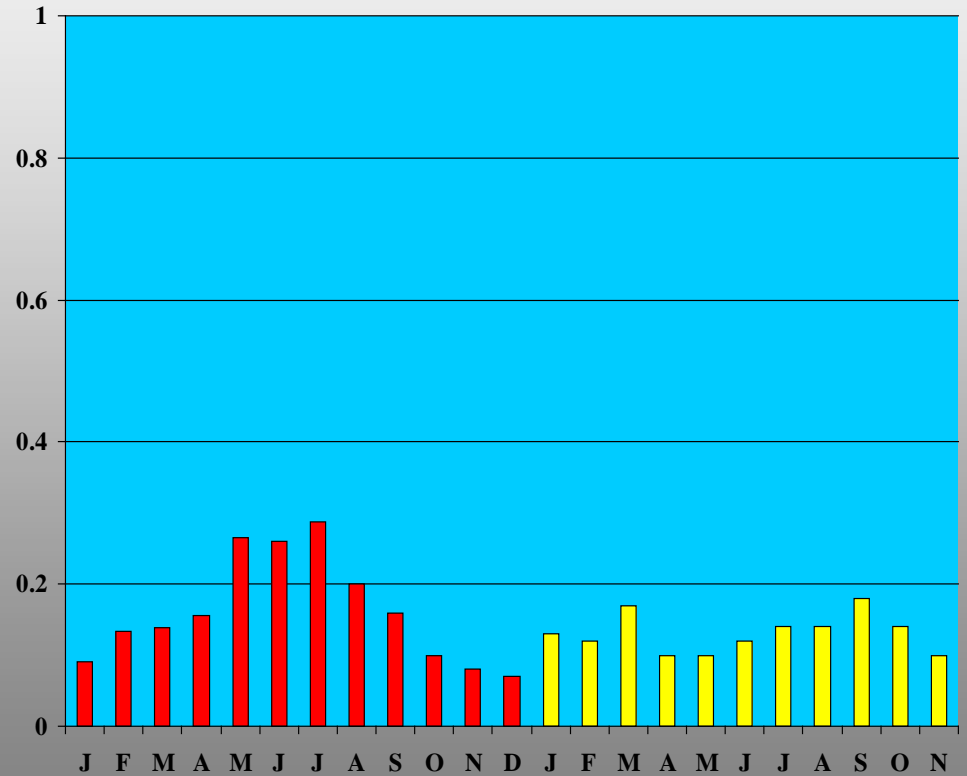


24 People

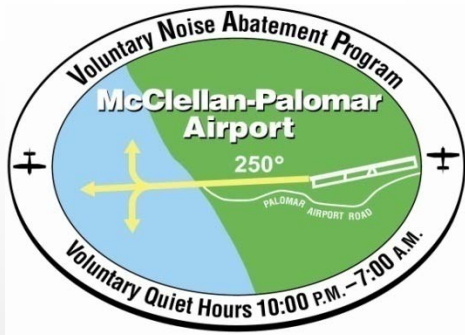
229,870(NINA Pop.)

= 0.10/1000 **CNCI**
 .10 person per 1000 population

CNCI



2009 - 2010



Palomar Airport Operational Benefit Index - PA **OBI**

Operations \times Average People
Per Aircraft

NINA Population

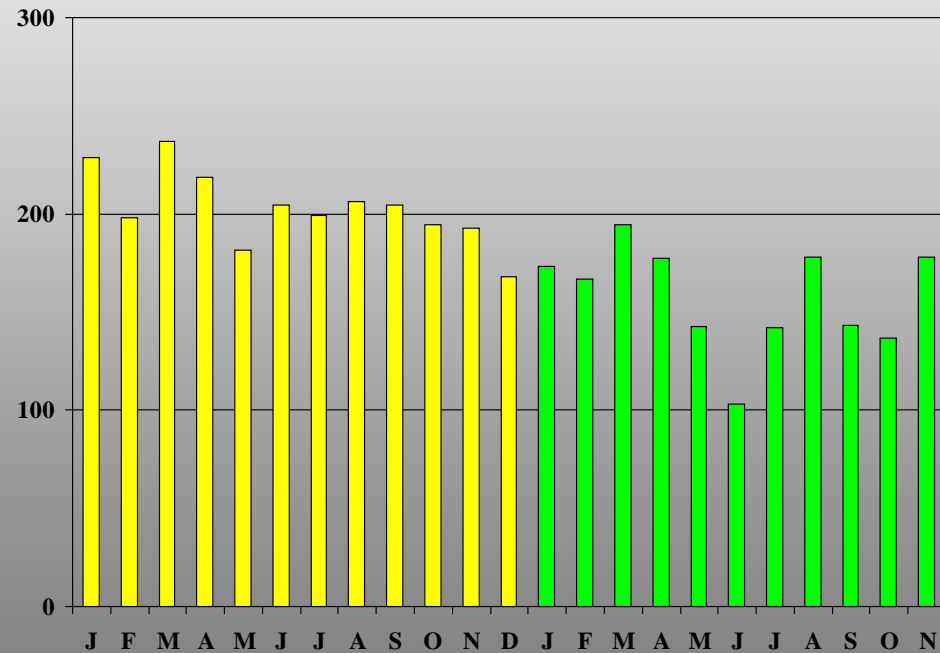


12,564 Ops \times 3.26 People
Per Aircraft

229,870(Nina Pop.)

= 178.2/1000 **OBI**

OBI



2009 - 2010

