

**Otay Valley River project – Area #3
Concept Plan Development
Wimmer Yamada and Caughey
Meeting Minutes – 1st Public Workshop**

September 1, 2009

Date of meeting: Thursday August 27, 2009 (7-9 pm)

Location of meeting: Montgomery High School Cafeteria

Present: Chuck Tucker, Bill Saumier, Charles Marchesano - San Diego County
Parks and Recreation (DPR)
Greg Cox - County of San Diego Supervisor
Pat Caughey, Chris Langdon, Vandita Mudgal – Wimmer Yamada and
Caughey (WYAC)
Mike Matalon – Matalon Architecture (MA)
Tricia McColl – David Evans and Associates (DEA)
Erich Lathers – BRG Consulting
John Willet – CAC Chair
Workshop Attendance Sign In sheet attached

Next meeting: Fall 2009 (exact date and location TBD)

7:10 pm

- 1. Introduction by County Supervisor Greg Cox**
 - a) Project introduction and description
 - b) Introduction of Community Advisory Committee
 - c) Introduction of Management and Consultant Team

- 2. Project Overview – Bill Saumier - County of San Diego DPR**
 - Project Overview
 - Review of Project Schedule
 - Introduction of Pat Caughey – WYAC

- 3. Workshop Introduction – Pat Caughey - WYAC**
 - Introduction of design team
 - Review of workshop format and goals
 - Introduction of Chris Langdon - WYAC

- 4. Powerpoint Presentation – Chris Langdon - WYAC**
 - Project location and site analysis

- Project photo inventory
- Project site history
- Hands over presentation to Pat Caughey – WYAC

5. Start Public Workshop – Pat Caughey - WYAC

- Follow-up on project schedule
- Overview of questionnaires
- Divides the workshop attendees into four working groups and initiates workshop discussions amongst groups with management and consultant team oversight
- Question raised from meeting attendee and resident adjacent to park site: Who will be responsible for security within the new park and ensure park improvements are not damaged or destroyed?
- Supervisor Cox response: Ranger station on Beyer Blvd. is approximately 150 yards from project site. New improvements and increased public use within the park generally leads to less vandalism. The County will continue to coordinate with City of San Diego Police Department. Increased volunteer programs within the park will also help reduce illegal activity
- Pat Caughey added that community adoption and stewardship of the new park is critical

7:40 – 8:30 pm

6. Workshop – Group Discussions

- Four working groups began discussions of park improvement opportunities and desired amenities
- Design team and management team circulated amongst groups to answer questions and provide input when asked.
- Generally, discussions leaned more toward passive use and education improvements as opposed to structured, active recreation improvements
- Groups expressed general concern for environment and educational opportunities for children

8:30 pm

7. Conclusion of Group Discussions and Summary of Findings

- Pat Caughey lead discussion to solicit ideas and input generated from each of the four work groups.

Group #1

Is active recreation the best use for the park?
Passive use may be more appropriate.

Group #2

Native oriented improvements
Amphitheater
Interpretive programs
Nature tactile course; ie 'Touch me' 'Smell me' 'Don't touch'
Natural mini golf
Buffers between trails and natural areas
Group pavilions

Group #3

Open space
No ball parks
Nature
Open turf
Community Garden
Amphitheater
Tell a story – History; Native Americans to settlers
Interpretive trails (similar to San Diego Zoo's new Elephant Odyssey)

Group #4

Enhanced pedestrian access
Playgrounds
Education – Horticulture/Agriculture
Restoration
Sensitivity to parking
Access is a concern – could dictate design
No sports lighting

Closing General Comments and Input

Restore river valley
Trails / signage
Interpretive Uses
Parking
No parking on Palm Ave.
Wildlife connectivity – Keep the link in the chain
Children / interpretive uses / social values
Camping / scouting activities
Cycle multiple uses: ie Frisbee, bocce, crouquet
Restrict use of alcohol
Fire abatement / mitigation



OVRP Active Recreation Area 3 - 1st Workshop Public Input

Public Workshop August 27 2009

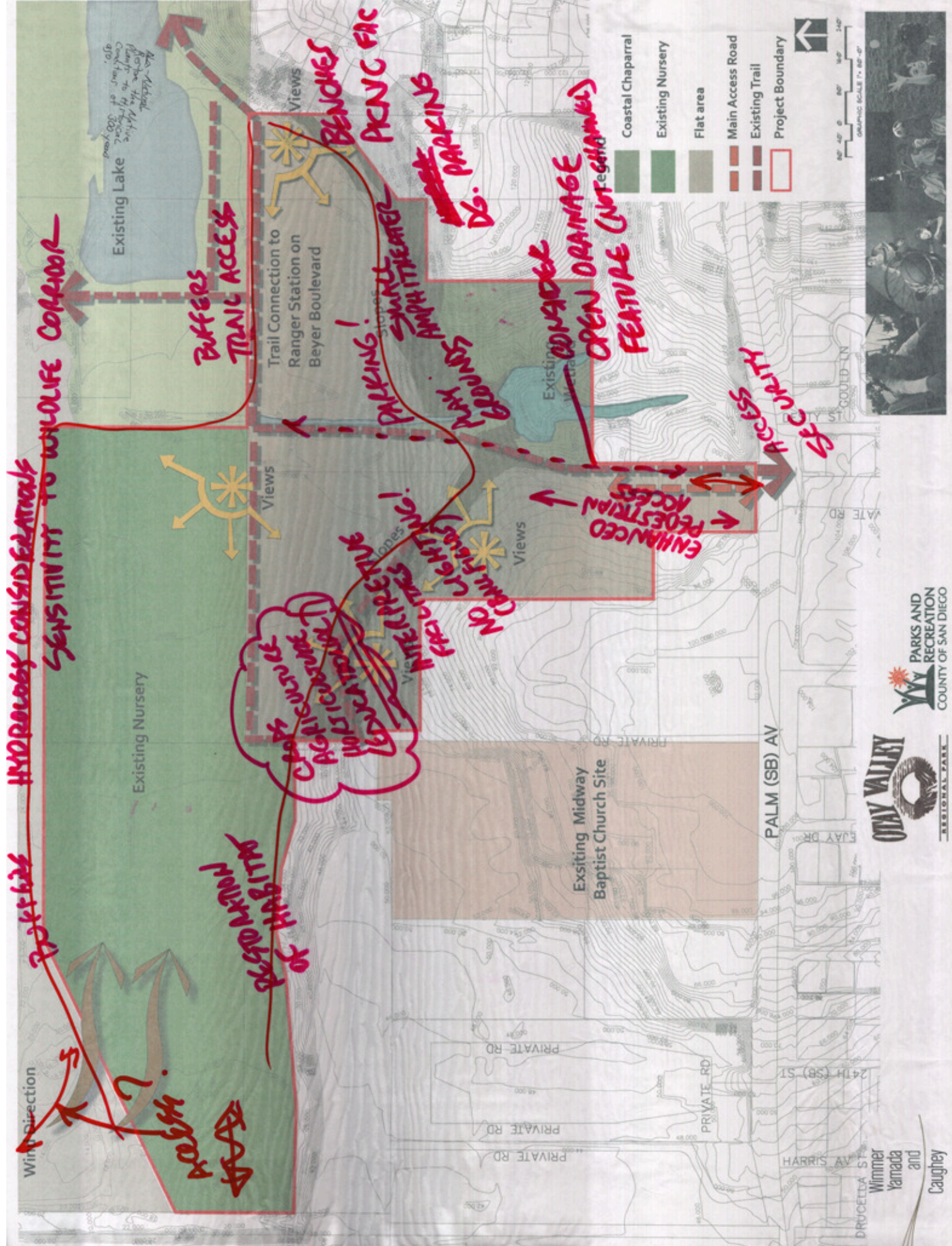
Proposed Park Program Amenities												
Ques 1: Choose top five activities you would like to see in this park												
												Result
Park Shelter	1										1	3
Nature Trail with Interpretative Signage	1	1	1	1	1							20
Picnic Area (with picnic tables, BBQs etc)	1	1		1								13
Open Turf Area (Non-Structural Play)		1										5
River Valley Overlook(s)	1	1	1	1	1	1	1	1	1	1	1	13
Off- Leash Dog Park		1		1	1							3
Frisbee Golf				1	1	1	1					5
Bocce Ball										1		1
Wet Play (Splash Park)		1										1
Interpretative Exhibits (Nature)	1	1	1	1	1	1	1	1	1	1	1	18
Exercise Bikes										1		2
Community Center				1							1	3
Multi-purpose field (baseball, soccer)	1	1	1	1						1		6
Baseball field												0
Lighted Baseball Field												0
Soccer Field only						1	1					2
Basketball Half-Courts				1								1
Children's Playground	1	1	1	1						1	1	8
Nature Trail	1	1	1	1						1	1	12
Shuffle Board	1			1							1	3
Par Course	1									1	1	6
GPS Trail Mapping	1									1	1	5
Skateboard Park										1		2
Ranger Station										1	1	4

Additional Comments

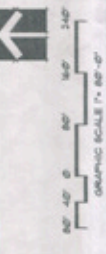
- 1) Several activities could be rotated on the same area Bocce ball, Frisbee Golf, Basket ball half courts etc. Rotate on a monthly cycle to give the grass etc a change to be grown. A similar situation is in practice at Montgomery Waller and other sports fields in South Bay. Geo Catching is an interpretational sport for a lot of people and could be incorporated. There are numerous sites already in use in OVRP. Example: Finny overlook, near 1805, in the Palm nursery etc.
- 2) Meandering nature trails along the river valley with connections to other park features. Educational facilities to engage local youth to the rich environment around them.
- 3) Stock pond with fish for children
- 4) No alcohol
- 5) Tell the story of the valley through time. Community garden to foster connections to natural uses.
- 6) Access roads should not be asphalt.
- 7) Protect southwest area - Pristine slopes. Locate in flat sections.
- 8) Time to get back to nature our children need it!
- 9) Why would you want a ball park in the middle of a river valley?
- 10) Continue the great restoration work already going on. Plant trees that are natural to the area.
- 11) This is not an appropriate area for organized sports like soccer, baseball, football etc.
- 12) The open fields should be designated so that they don't get filled with soccer games. At Lucky Waller soccer fills almost the whole park, for no other use.
- 13) It should not be an active recreation like soccer, baseball, basketball etc.

Additional Comments Continued

- 14) Restore the area to get mitigation credits for more appropriate site or buy a more appropriate site for active recreation but don't place it if its in river corridor.
- 15) I really want a natural park, native plants and NO ballfields. With potential ball fields and quarry squeezings the animals and habitat in OVRP, severe damage will be adone with additional development.
- 16) Covered picnic area.
- 17) Childrens playground may be based on Native American theme Tipis, log cabin style play equipments.
- 18) Many restrictions for this site : Access, security , MHPA. Main access should be from Hanson Property. Probably not good for a typical Active Park.
- 19) The most important thing is to remember that this is a river valley and the wildlife corridor must be maintained and enhanced. We would like to see more native plants and restoration. There are many concerns with developing this area including impacts to water quality. The fact that it is located directly in the floodplain and the heavy amount located in MHPA. There might be an opportunity to bring the youth in to teach them about nature. This could include a playgorund, small amphitheater, nature trails. Any project that goes down there must work with the natural space and be buit using eco-friendly materials and with a natural theme, have significant buffers, and limit the amount of impervious surfaces.
- 20) Leave it alone. Restore the river to historical conditions of 300 years ago when the native people lived there (OTAY Tribe). If money is to be spent , spend it on trails, signs, plants.
- 21) Non native removal is expensive, spend the current funds on it. Native planting is also expensive- lets do it!
- 22) I want a great friendly park that is more than a walking site.
- 23) Yes, we want ballparks and usage for all but I don't want to pave over the flood area in the park.
- 24) Amphitheater buit around natural community learning center. With kiosks for natural artisans (Spanish Village , Balboa Park)
- 25) Look at La Purisina Mission Monpac for interpretative displays.
- 26) Building/ Architecture design true to history of area. Buildings should be green powered.
- 27) Some ADA nature trails



- Coastal Chaparral
- Existing Nursery
- Flat area
- Main Access Road
- Existing Trail
- Project Boundary



Hydrology Considerations
Sensitivity to Wildlife Corridor

Parks has

Windy direction
Access
Enhanced Pedestrian Access

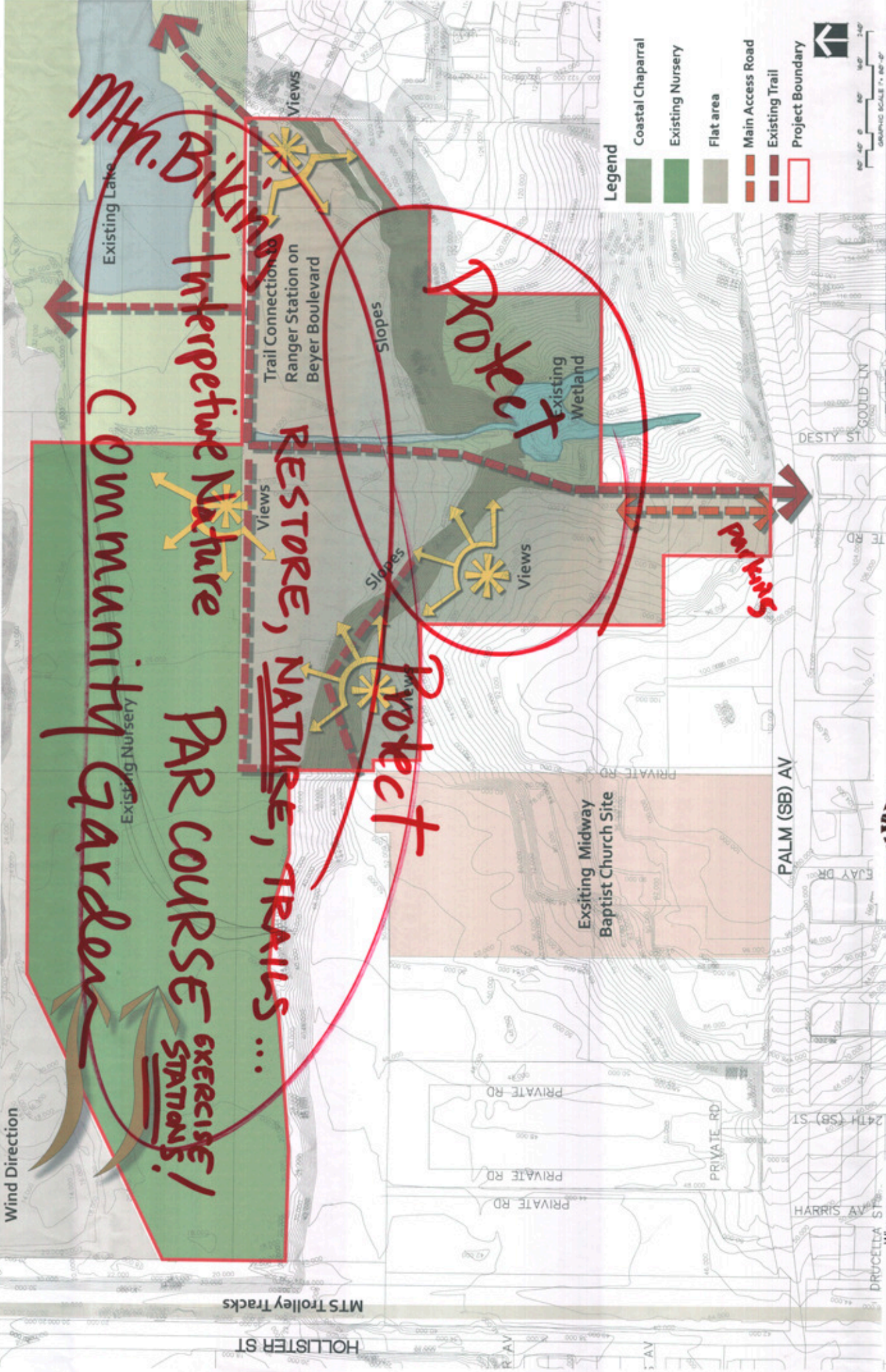
Views
Benches
Picnic FAC
PARKING!
Small Amphitheater
Open Drainage Feature (Not Channel)
Access
FC Health
Access

NO Clearing!
Water Feature
Native Plants!
Greening!
PARKING!
D6.

Enhanced Pedestrian Access



Wimmer
Yamada
and
Caughy



Handwritten: MTS Biking
 Interpretive Nature
 Community Garden
 PAR COURSE EXERCISE STATIONS!
 RESTORE, NATURE, TRAILS...
 Protect
 Protect

- Legend**
- Coastal Chaparral
 - Existing Nursery
 - Flat area
 - Main Access Road
 - Existing Trail
 - Project Boundary



Wimmer
 Yamada
 and
 Caughy